

2025

DEALER WORKBOOK



SBE3



BENELLI
ADVANCED IMPACT



Commitment. If there's one word that answers the question about what it takes to succeed, that's it. At Benelli, commitment isn't just a word - it's a way of life that shows in every firearm we make. Our commitment to innovation results in cutting-edge technologies that consistently enhance the shooting experience. Our commitment to performance delivers the most rugged, reliable and comfortable-to-shoot firearms you can buy. Commitment to excellence is what has made Benelli shotguns and rifles the firearms most sought-after by discerning hunters and target shooters for generations.

It's our commitment to you, to your positive experience in the outdoors, and to the future of shooting sports that feeds our drive to help you dominate the skies, the field, the distance, and any other shooting challenge you face. Commit yourself to shooting success and enjoyment.





2025 DEALER WORKBOOK

Most hunting in the U.S. takes place in the spring and fall - seasons when weather can go from sweltering to freezing in minutes, and from drought to deluge just as fast. You prepare for these contingencies by choosing gear that can keep up no matter what the weather throws at you. That's why your firearm needs to be a Benelli. Our rifles and shotguns have accompanied serious hunters around the world for generations. Renowned for their dependability, ruggedness, fast handling, and accuracy, Benelli firearms have brought home game and competition trophies from Africa to Alaska and nearly everywhere in between. Life's too short for anything but the best. Join team Benelli today to dominate the skies, the fields, and the weather.

CONTENTS

2 Introduction	40 Montefeltro	68 SuperNova
4 Technology	46 828U – Introduction	70 NOVA 20-Gauge
10 SBE 3 – Introduction	56 Turkey Guns	72 NEW M2 Speed
24 ETHOS – Introduction	58 M4 – Introduction	74 NEW LUPO – Introduction
36 M2	62 M2/M3 Tactical	92 R1 Endurance
	64 NEW NOVA 3 – Introduction	94 Gear & Accessories

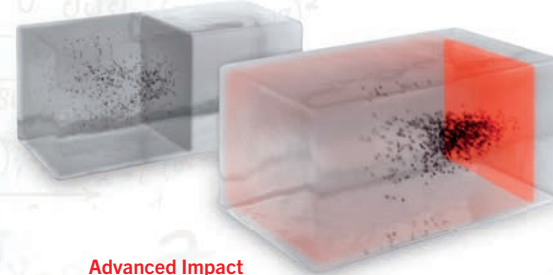


TECHNOLOGY



BENELLI ADVANCED IMPACT

Standard Barrel



Advanced Impact

IMAGINE A BARREL
DESIGNED
TO GENERATE UP TO
50% MORE
PENETRATION*

*Compared with non-A.I. barrel; Tested at 30 meters



Benelli Technology

For generations, Benelli has been recognized as the leader in firearm innovation and shooting sports technology. Our exciting new Advanced Impact technology (A.I.) demonstrates why. Using the same shells as you do now, a Benelli shotgun outfitted with A.I. and our Advanced Impact CRIO Chokes will deliver deeper penetration, better pellet density, and stopping power like you've never imagined possible. Step into the future of hunting with Benelli A.I. today.

That's Advanced Impact Technology

Benelli Advanced Impact is a dynamic new barrel and choke system designed to generate more velocity, more energy, and more downrange penetration from shells.*

This system delivers:

Up To 50% More Penetration On Target

- More energy translates to more knock-down power and dusted clays

Improved Pellet Density

- A.I. barrels produce a more uniform and tighter shot string

Advanced Impact is available in models for sporting, upland and waterfowl...including the Super Black Eagle 3.

*Compared with non-A.I. barrel, tested at 30 meters.





A Benelli BE.S.T.-treated barrel with no sign of rust or corrosion after 3 months of saltwater exposure.



A competitor's barrel showing the damage from 48 hours of saltwater exposure.

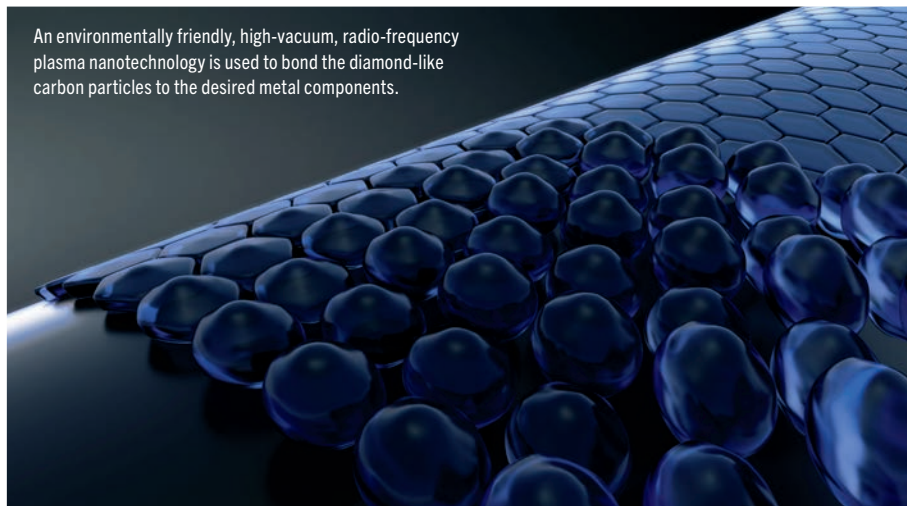
BE.S.T. BENELLI SURFACE TREATMENT



BE.S.T. – Benelli Surface Treatment

Harsh environments wreak havoc on gun metal. Benelli spent more than a decade developing BE.S.T. (Benelli Surface Treatment), a proprietary coating that protects steel with a tough, impenetrable armor that stops rust and corrosion. Applied using nano-technology and diamond-like carbon particles, BE.S.T. outperforms every other available coating and surface treatment in the firearms market today. Parts treated with BE.S.T. have been tested by immersing them in saltwater for months with no signs of rust or corrosion.

Benelli BE.S.T. surface treatment is simply the most effective rust and corrosion firearm protection available. Benelli is so confident in the BE.S.T. performance that treated parts are backed with a 25-year warranty against rust and corrosion. Available in 2025 on select SBE 3, ETHOS, 828U and Lupo models.



An environmentally friendly, high-vacuum, radio-frequency plasma nanotechnology is used to bond the diamond-like carbon particles to the desired metal components.



In addition to Benelli's industry-leading 10-year warranty, BE.S.T.-treated barrels and parts carry a warranty against rust and corrosion for 25 years from the date of purchase.



UNTREATED STEEL

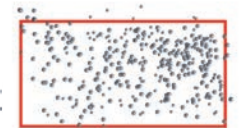


CRYGENICALLY TREATED STEEL

Crio® Chokes are the second part of the Benelli Crio® System. Extra-long choke tubes with more gradual constriction, coupled with the slick surface created by cryogenic treatment, put more pellets on target and yield denser, more uniform shot patterns.



UNTREATED
Irregular and uneven shot pattern.



CRYGENICALLY TREATED
Denser and more uniform shot pattern.



The Crio® System combines a barrel frozen to -300° F with a specially designed longer choke tube that is also cryogenically treated. The result is a denser, more uniform shot pattern that puts more pellets on target.

Benelli's Crio System Technology

Cryogenic physics has revealed steel changes at the molecular level when cooled to -300° F. When a Benelli barrel is cryogenically treated, all the stresses caused by hammer forging are relieved and the surface of the bore becomes more even-grained. The result is a slicker surface offering less resistance to wads and shot charges. With smoother, more uniform surfaces, Benelli Crio® barrels deliver superior patterns and stay clean longer.



Benelli's Inertia Driven® System.

"THE LAW OF INERTIA" — is Newton's First Law of Physics and is as consistent and unchangeable as The Law of Gravity. Benelli has harnessed this basic law of physics in the Inertia Driven® System to operate the world's fastest, simplest and most reliable semi-automatic shotguns. It's not boasting, it's the law — The Law of Inertia.

RELIABLE — The Inertia Driven® System never needs adjusting and will cycle anything from light field loads to 3½" magnums with consistent reliability year after year. In fact, there are Inertia Driven® Benelli shotguns that have fired more than 500,000 rounds, still in the field and functioning perfectly.

SIMPLE — Inertia Driven® is simple with only three primary parts: the bolt body, the inertia spring and the rotating bolt head. Simple is better.

FASTER — By greatly reducing the mass of the system's parts, we made Inertia Driven® faster.

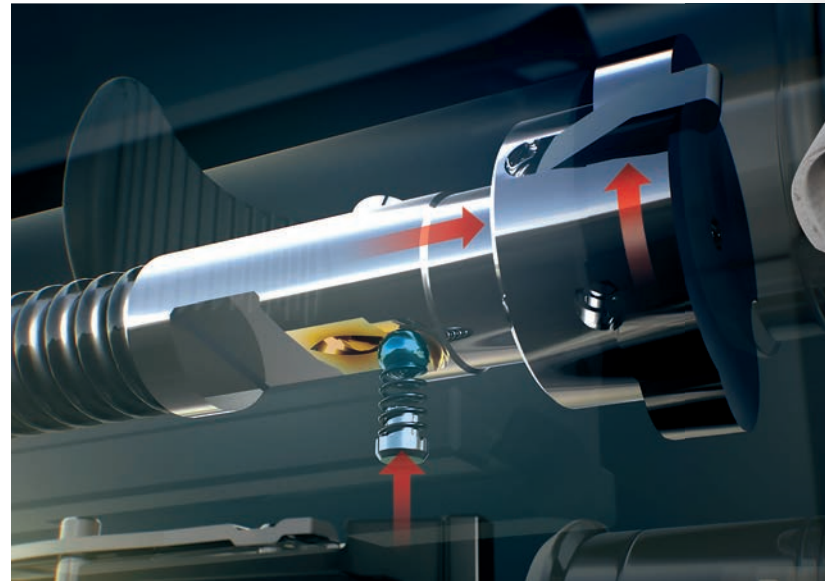
CLEANER — Gas, smoke and burned powder are not channeled into the gun's firing mechanism, as they are in gas systems, allowing more efficient operation and easier firearm cleaning.

STRONG — The strong steel locking lugs on the Inertia Driven® System's rotating bolt head not only lock steel-to-steel into the gun's barrel; the lugs lock-in even tighter during firing.

LOW MAINTENANCE — Because the Inertia Driven® System functions so much cleaner than conventional gas-operated semi-automatics, gun cleaning takes a fraction of the time. You spend more time shooting and less time cleaning.

LIGHT WEIGHT — The Inertia Driven® System is not only simple, it's also lightweight. Benelli shotguns are among the lightest semi-automatic shotguns ever produced. This allows for faster shouldering, quick target acquisition, easy-swinging follow through and less fatigue during long days in the field.

PERFECT BALANCE — With no springs, action bar linkage or heavy gas cylinder under the forend, Benelli's Inertia Driven® shotguns balance like fine game guns should.

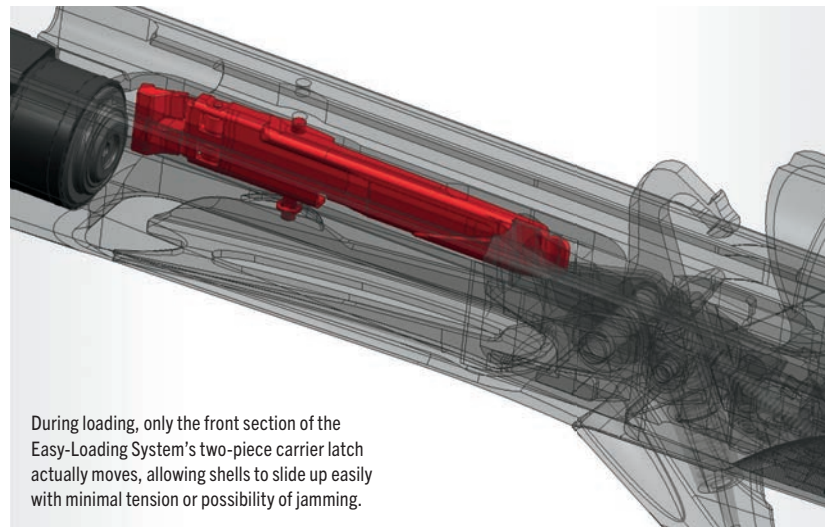


◀ A spring-activated ball detent slides effortlessly in the bolt, locking it into battery no matter the pressure. Also, if the bolt is accidentally bumped or pulled back even by a small amount, the detent's pressure will guide it back into the locked position. Result: Benelli Inertia guns/firearms will always be ready to fire when you are and with whatever shotshells you choose.

Easy-Locking Bolt System



Versatility without compromise: having a shotgun with a 3½" chamber does not mean you must always shoot the powerful stuff. The SBE 3's patented locking mechanism works flawlessly with all shotgun loads—from light clay loads to the ultimate goose-busters.

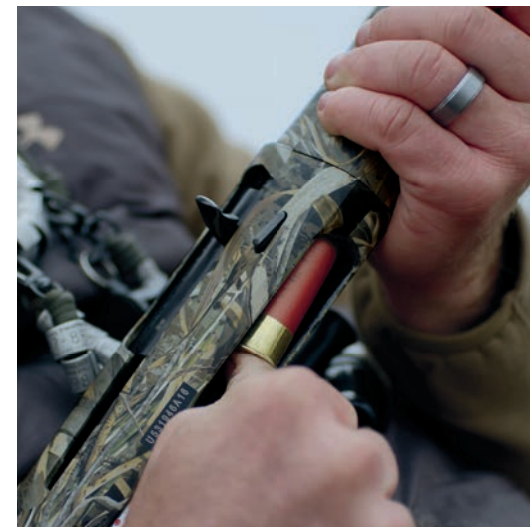


During loading, only the front section of the Easy-Loading System's two-piece carrier latch actually moves, allowing shells to slide up easily with minimal tension or possibility of jamming.

Easy-Loading System



A beveled loading port, redesigned carrier and a two-piece carrier latch have all been incorporated into the Super Black Eagle 3 to make loading the magazine effortless.



Grooves in the loading port help you guide shells in without having to take your eyes off incoming birds. The beveled loading port also features a wider design to help funnel shells toward the magazine, a must for gloved hunters.

Benelli's Unrivaled Recoil-Reduction Systems

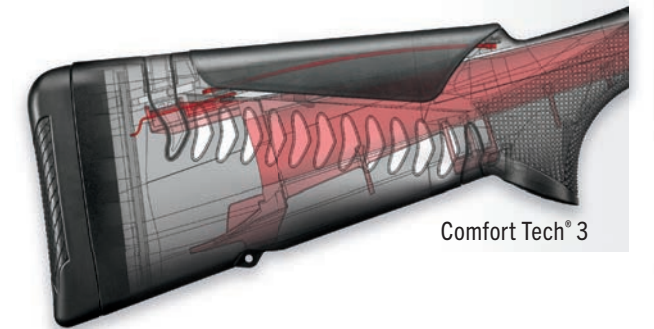
Benelli has developed the performance of recoil-reducing technology to a level that leaves the competition behind. Three recoil-reduction systems have been optimized specifically for the platforms they serve, delivering unrivaled results in reducing felt recoil.



COMFORTech 3

AVAILABLE MODELS:
Super Black Eagle 3
ETHOS Cordoba BE.S.T.
ETHOS SuperSport
R1 Endurance

ComforTech™ was the first recoil-reduction system of its kind. By splitting the stock diagonally and utilizing shock-absorbing chevrons, the entire stock was transformed into a recoil pad. This chevron system, now 16 years old, is still the most efficient design available and was the basis for the SBE 3 stock. The chevron size and location has been optimized on ComforTech 3. Further, Benelli engineers created a new cheek-comb pad called Combtch, which greatly reduces facial impact and vibrations.



ComforTech® 3



PROGRESSIVE COMFORT

AVAILABLE MODELS:
ETHOS LUPO HPR
828U SBE 3 Wood
LUPO

The Progressive Comfort recoil-reduction system is an unobtrusive, lightweight and simple system. It's able to self-adjust for maximum recoil reduction related to the power of the load used because it has three sets of interlocking leaves, or fingers, with different levels of elasticity. This system is out of sight inside a wooden stock to better maintain a traditional look.



Progressive Comfort



COMFORTech

AVAILABLE MODELS:
Super Nova
M2 Tactical

Benelli's ComforTech™ system revolutionized shooting comfort by reducing felt recoil without adding weight. Originally designed for the SBE II platform, its success and popularity compelled us to offer it in other Benelli models.



ComforTech®



Benelli's Unmatched 10-Year Warranty. Our industry-leading 10-Year Warranty (U.S. only), guarantees if anything should go wrong under normal use, your firearm will be serviced by skilled gunsmiths at our national firearm service center. While your Benelli is under warranty, we will assume the cost of parts, labor and shipping required to get your firearm back to you and working perfectly.



DOMINATE THE SKIES WITH THE SUPER BLACK EAGLE 3



SBE3 marked the full redesign of our venerable Super Black Eagle platform. With carefully considered insights from our pro-staff and veteran hunters, Benelli design engineers have spent nearly 10 years in development focused on areas of critical importance to serious hunters. These included improved ergonomics; intuitive, flawless functionality; updated design, style and feel for the latest in modern hunting reliability that's all about the endgame, and absolute superiority in the most unforgiving conditions.

“ Long before I shot Benelli's Super Black Eagle, the model was already legendary among shotgun enthusiasts. And the minute I got my hands on one, I could understand why.
Duncan Grant - Sporting Classics ”

Super Black Eagle 3 A.I. NEW! Dominate the Skies



BENELLI
ADVANCED IMPACT

SUPER BLACK EAGLE 3 A.I. BE.S.T. – 12-GA, 3½"
ITEM #12521 GORE® OPTIFADE Timber, Anodized Gray/Gray BE.S.T.

Just when you thought the SBE 3 couldn't get any better, here's the ultimate waterfowling firearm - the Super Black Eagle 3 with both Benelli Advanced Impact and BE.S.T. Enjoy all the standard comfort and performance features inherent in the SBE 3 line in a hard-hitting firearm optimized to resist corrosion in the harshest of hunting environments.

  **BE.S.T.** 

An upsized bolt handle teams with an enlarged bolt release and oversized safety to make operation easier with cold or gloved hands.



Our redesigned triangular mag cap has more pronounced edges, allowing for excellent grip and leverage when tightening or loosening in wet, cold conditions.



SUPER BLACK EAGLE 3 A.I. BE.S.T. – 20-GA, 3"
ITEM #12531 GORE® OPTIFADE Timber, Anodized Gray/Gray BE.S.T.

SUPER BLACK EAGLE 3 A.I. — BE.S.T. NEW!

ITEM NUMBER	BARREL LENGTH	STOCK	OVERALL LENGTH	AVERAGE WEIGHT	MSRP
SUPER BLACK EAGLE 3 A.I. BE.S.T. 12-GAUGE 2¾", 3" AND 3½" †					
12521	28"	GORE® OPTIFADE™ Timber	50"	7.0 lbs.	\$3199

COMMON SPECIFICATIONS: Magazine Capacity: 3+1 A.I. Chokes: C, IC, M, IM, F
Type of Sights: Red-bar front sight Length of Pull: 14¼" Drop at Heel: 2¼"
Drop at Comb: 1¼" Minimum recommended load: 3-dram, 1¼-oz. loads (12-ga.) †Receiver drilled and tapped for 93A Weaver base.

SUPER BLACK EAGLE 3 A.I. — BE.S.T. NEW!

ITEM NUMBER	BARREL LENGTH	STOCK	OVERALL LENGTH	AVERAGE WEIGHT	MSRP
SUPER BLACK EAGLE 3 A.I. BE.S.T. – 20-GAUGE 2¾" AND 3"					
12531	28"	GORE® OPTIFADE™ Timber	49.5"	5.9 lbs.	\$2999

COMMON SPECIFICATIONS: Magazine Capacity: 3+1 A.I. Chokes: C, IC, M, IM, F
Type of Sights: Red-bar front sight Length of Pull: 14¼" Drop at Heel: 2¼"
Drop at Comb: 1¼" Minimum recommended load: 2½-dram, ¾-oz. loads (20-ga.) †Receiver drilled and tapped for 93A Weaver base.

Super Black Eagle 3 Dominate the Skies





SUPER BLACK EAGLE 3 BE.S.T. – 12-GA, 3½"
ITEM # 12102 Black synthetic

Launched in 1991, the Super Black Eagle quickly reset reliability expectations for semi-automatic shotguns. Today, with the third generation of the SBE, this legendary reliability has been carried forward by combining modern technology with improved ergonomics.

  **BE.S.T.**

An upsized bolt handle teams with an enlarged bolt release and oversized safety to make operation easier with cold or gloved hands.



Our redesigned triangular mag cap has more pronounced edges, allowing for excellent grip and leverage when tightening or loosening in wet, cold conditions.



SUPER BLACK EAGLE 3 — BE.S.T.

ITEM NUMBER	BARREL LENGTH	STOCK	OVERALL LENGTH	AVERAGE WEIGHT	MSRP
SUPER BLACK EAGLE 3 BE.S.T. – 20-GAUGE 2¾" AND 3"					
12104	28"	Black synthetic	49.5"	5.9 lbs.	\$2299

COMMON SPECIFICATIONS: Magazine Capacity: 3+1 Crio® Extended Chokes: C, IC, M, IM, F
Type of Sights: Red-bar front sight Length of Pull: 14¼" Drop at Heel: 2¼"
Drop at Comb: 1¼" Minimum recommended load: 2½-dram, ¾-oz. loads (20-ga.) †Receiver drilled and tapped for 93A Weaver base.



SUPER BLACK EAGLE 3 BE.S.T. – 28-GA, 3"
ITEM # 12106 Black synthetic

SUPER BLACK EAGLE 3 — BE.S.T.

ITEM NUMBER	BARREL LENGTH	STOCK	OVERALL LENGTH	AVERAGE WEIGHT	MSRP
SUPER BLACK EAGLE 3 BE.S.T. 12-GAUGE 2¾", 3" AND 3½" †					
12102	28"	Black synthetic	50"	7.0 lbs.	\$2499

COMMON SPECIFICATIONS: Magazine Capacity: 3+1 Crio® Extended Chokes: C, IC, M, IM, F
Type of Sights: Red-bar front sight Length of Pull: 14¼" Drop at Heel: 2¼"
Drop at Comb: 1¼" Minimum recommended load: 3-dram, 1¼-oz. loads (12-ga.) †Receiver drilled and tapped for 93A Weaver base.

SUPER BLACK EAGLE 3 — BE.S.T.

ITEM NUMBER	BARREL LENGTH	STOCK	OVERALL LENGTH	AVERAGE WEIGHT	MSRP
SUPER BLACK EAGLE 3 BE.S.T. – 28-GAUGE 2¾" AND 3"					
12106	28"	Black synthetic	49.5"	5.6 lbs.	\$2299

COMMON SPECIFICATIONS: Magazine Capacity: 2+1 Crio® Extended Chokes: C, IC, M, IM, F
Type of Sights: Red-bar front sight Length of Pull: 14¼" Drop at Heel: 2¼"
Drop at Comb: 1¼" Minimum recommended load: ¾-oz. loads (28-ga.) †Receiver drilled and tapped for 93A Weaver base.

Super Black Eagle 3 A.I. Cerakote

Dominate the Skies

NEW!



SUPER BLACK EAGLE 3 A.I. – 12-GA, 3.5"
ITEM # 12351 Realtree® Max-7™/Flat Dark Earth Cerakote



SUPER BLACK EAGLE 3 A.I. – 12-GA, 3.5"
ITEM # 12371 Mossy Oak® Bottomland™/Patriot Brown Cerakote



NEW!

SUPER BLACK EAGLE 3 A.I. — CERAKOTE

ITEM NUMBER	BARREL LENGTH	STOCK	OVERALL LENGTH	AVERAGE WEIGHT	MSRP
SBE 3 A.I. CERAKOTE FINISH 12-GAUGE 2¾", 3" AND 3½" †					
12351	28"	Realtree® Max-7™	50"	7.0 lbs.	\$2849
12371	28"	Mossy Oak® Bottomland™	50"	7.0 lbs.	\$2849

COMMON SPECIFICATIONS: Magazine Capacity: 3+1 Type of Sights: Red-bar front sight Length of Pull: 14¼" Drop at Heel: 2½" Drop at Comb: 1¼" Minimum recommended load: 3-dram, 1¼-oz. loads (12-ga.) †Receiver drilled and tapped for 93A Weaver base.

NEW!

SUPER BLACK EAGLE 3 A.I. — CERAKOTE

ITEM NUMBER	BARREL LENGTH	STOCK	OVERALL LENGTH	AVERAGE WEIGHT	MSRP
SBE 3 A.I. CERAKOTE FINISH 20-GAUGE 2¾" AND 3"					
12361	28"	Realtree® Max-7™	49.5"	5.9 lbs.	\$2599
12381	28"	Mossy Oak® Bottomland™	49.5"	5.9 lbs.	\$2599

COMMON SPECIFICATIONS: Magazine Capacity: 3+1 Type of Sights: Red-bar front sight Length of Pull: 14¼" Drop at Heel: 2½" Drop at Comb: 1¼" Minimum recommended load: 2½-dram, ¾-oz. loads (20-ga.) †Receiver drilled and tapped for 93A Weaver base.

STANDARD FEATURES

A.I. CHOKES: C, IC, M, IM, F and choke wrench.
FINISHES: Realtree® Max-7™/Flat Dark Earth Cerakote, Mossy Oak® Bottomland™/Patriot Brown Cerakote.
BARRELS: Crio®-treated barrel.
RECOIL PADS: Comfort Tech® 3 recoil pads and Combtech pads.
SHIM KIT: For adjustment of drop and cast.
HARD CASE: Custom fitted hard case to protect during transport.

OPTIONAL FEATURES

COMFORTECH 3 RECOIL PADS: Three options to customize length of pull to 13⅞", 14⅜" or 14⅞"
COMB-TECH® RAISED COMB PADS: Two options to customize sight plane for different shooting scenarios.



When the hunting is great but the weather isn't, you'll want the peace of mind that comes from knowing your shotgun is able to stand up to the elements. These Super Black Eagle 3 shotguns feature glare- and water-resistant Cerakote finish to resist corrosion. They're outfitted with all the standard SBE 3 comfort-enhancing

and performance features such as the dependable Inertia Driven System, ComforTech 3 recoil mitigation, Crio® System barrels for denser patterns, and the revolutionary new Benelli Advanced Impact barrel system for devastating and unrivaled terminal effect on game. Available in two popular waterfowling camo patterns.

Super Black Eagle 3 Dominate the Skies



SUPER BLACK EAGLE 3 BE.S.T. – 12-GA, 3½"
ITEM # 10316 Black synthetic



Launched in 1991, the Super Black Eagle quickly reset reliability expectations for semi-automatic shotguns. Today, with the third generation of the SBE, this legendary reliability has been carried forward by combining modern technology with improved ergonomics.



An upsized bolt handle teams with an enlarged bolt release and oversized safety to make operation easier with cold or gloved hands.



Our redesigned triangular mag cap has more pronounced edges, allowing for excellent grip and leverage when tightening or loosening in wet, cold conditions.



SUPER BLACK EAGLE 3 – 12-GA, 3½"
ITEM # 10311 Realtree® Max-7™



SUPER BLACK EAGLE 3 – 12-GA, 3½"
ITEM # 10351 Mossy Oak® Bottomland™



SUPER BLACK EAGLE 3 — STEADYGRIP™ – 12-GA, 3½"
ITEM # 10352 Mossy Oak® Bottomland™



SUPER BLACK EAGLE 3 – 12-GA, 3½"
ITEM # 10361 GORE™ OPTIFADE™ Waterfowl Timber



SUPER BLACK EAGLE 3 – 12-GA, 3½"
ITEM # 11230 GORE™ OPTIFADE™ Waterfowl Timber, Tungsten Cerakote



SUPER BLACK EAGLE 3 – 12-GA, 3½"
ITEM # 11233 GORE™ OPTIFADE™ Marsh, Patriot Brown Cerakote



SUPER BLACK EAGLE 3 – 12-GA, 3½"
ITEM # 10380 Satin walnut, Progressive Comfort

STANDARD FEATURES

- EXTENDED CHOKE TUBES:** IC, M, F, Crio® chokes.
- FLUSH CHOKE TUBES:** C, IM, F Crio® chokes and wrench.
- FINISHES:** BE.S.T. Treatment, Realtree® Max-7™, Black synthetic, Mossy Oak® Bottomland™, GORE™ OPTIFADE™ Timber, GORE™ OPTIFADE™ Marsh, GORE™ OPTIFADE™ Timber/Tungsten Cerakote, Satin walnut, GORE™ OPTIFADE™ Marsh/Patriot Brown Cerakote.
- BARRELS:** Crio®-treated barrel.
- RECOIL PADS:** Comfort Tech® 3 recoil pads and Combtech pads.
- SHIM KIT:** For adjustment of drop and cast.
- HARD CASE:** Custom fitted hard case to protect during transport (not included with SteadyGrip™ model).

OPTIONAL FEATURES

- CHOKE TUBES:** Extended Crio® chokes C, IM, F and XF for turkey.
- COMFORTTECH 3 RECOIL PADS:** Three options to customize length of pull to 13⁷/₈", 14³/₈" or 14³/₄".
- COMB-TECH® RAISED COMB PADS:** Two options to customize sight plane for different shooting scenarios.

SUPER BLACK EAGLE 3					
ITEM NUMBER	BARREL LENGTH	STOCK	OVERALL LENGTH	AVERAGE WEIGHT	MSRP
SUPER BLACK EAGLE 3 12-GAUGE 2¾", 3" AND 3½" †					
10321	26"	Black synthetic	48"	6.9 lbs.	\$2199
10316	28"	Black synthetic	50"	7.0 lbs.	\$2199
10380	28"	Satin walnut	50"	7.0 lbs.	\$2299
10310	26"	Realtree® Max-7™	48"	6.9 lbs.	\$2299
10311	28"	Realtree® Max-7™	50"	7.0 lbs.	\$2299
10360	26"	GORE™ OPTIFADE™ Timber	48"	6.9 lbs.	\$2299
10361	28"	GORE™ OPTIFADE™ Timber	50"	7.0 lbs.	\$2299
10385	28"	GORE™ OPTIFADE™ Marsh	50"	7.0 lbs.	\$2299
10350	26"	Mossy Oak® Bottomland™	48"	6.9 lbs.	\$2299
10351	28"	Mossy Oak® Bottomland™	50"	7.0 lbs.	\$2299
10352	24"	Bottomland™ SteadyGrip™	46"	6.8 lbs.	\$2349
11230	28"	Timber/Tungsten	50"	7.0 lbs.	\$2399
11233	28"	Marsh/Patriot Brown	50"	7.0 lbs.	\$2399

COMMON SPECIFICATIONS: Magazine Capacity: 3+1 Crio® Flush Chokes: C, IM, F Crio® Extended Chokes: IC, M Type of Sights: Red-bar front sight Length of Pull: 14¹/₄" Drop at Heel: 2¹/₄" Drop at Comb: 1¹/₄" Minimum recommended load: 3-dram, 1¹/₄-oz. loads (12-ga.) †Receiver drilled and tapped for 93A Weaver base.

Super Black Eagle 3 Left-Hand



SUPER BLACK EAGLE 3 – 12-GA, 3½"
ITEM # 10376 Realtree® Max-7™

SUPER BLACK EAGLE 3 – LEFT-HAND

ITEM NUMBER	BARREL LENGTH	STOCK	OVERALL LENGTH	AVERAGE WEIGHT	MSRP
SUPER BLACK EAGLE 3 12-GAUGE 2¾", 3" AND 3½" †					
10371	28"	Black synthetic	50"	7.0 lbs.	\$2199
10376	28"	Realtree® Max-7™	50"	7.0 lbs.	\$2299

COMMON SPECIFICATIONS: Magazine Capacity: 3+1 Crio® Flush Chokes: C, IM, F Crio® Extended Chokes: IC, M Type of Sights: Red-bar front sight Length of Pull: 14¹/₄" Drop at Heel: 2¹/₄" Drop at Comb: 1¹/₄" Minimum recommended load: 3-dram, 1¹/₄-oz. loads (12-ga.) †Receiver drilled and tapped for 93A Weaver base.

All the revolutionary features that have made the Super Black Eagle 3 America's favorite 3½"-shell-shooting shotgun are now available for southpaws. And no, this is not a shortcut-filled "adaptation." It is a perfect left-handed mirror image of the original Super Black Eagle 3—in either a Realtree® Max-7™ camo pattern or in black synthetic.

SPECIFICATIONS AND PRICES
SUBJECT TO CHANGE WITHOUT NOTICE.



SBE3

12 - GAUGE
3" CHAMBER



SUPER BLACK EAGLE 3 – 12-GA, 3"
ITEM # 10353 Mossy Oak® Bottomland™



Launched in 1991, the Super Black Eagle quickly established dominance of both the skies and the hunting shotgun market. Today, the third generation of the SBE platform carries forward Benelli's reputation for reliability and innovation in the SBE3. Optimized for hunting by integrating the latest ergonomic science, recoil-reducing technology and hunt-enhancing performance features, the SBE3 is now available in a 12-gauge model chambered for 3" shells. You get the legendary all-weather performance and rugged reliability of the SBE3, 3.5"-inch models in a shotgun made to shoot both 3" and 2-3/4" shells.



SUPER BLACK EAGLE 3

ITEM NUMBER	BARREL LENGTH	STOCK	OVERALL LENGTH	AVERAGE WEIGHT	MSRP
SUPER BLACK EAGLE 3 – 12-GAUGE 2¾" AND 3"					
10317	28"	Black synthetic	49.5"	6.9 lbs.	\$1949
10309	28"	Realtree® Max-7™	49.5"	6.9 lbs.	\$2049
10353	28"	Mossy Oak® Bottomland™	49.5"	6.9 lbs.	\$2049
10362	28"	GORE™ OPTIFADE™ Timber	49.5"	6.9 lbs.	\$2049
SUPER BLACK EAGLE 3 COMPACT – 12-GAUGE 2¾" AND 3"					
11320	26"	Black synthetic	46.25"	6.7 lbs.	\$1949

COMMON SPECIFICATIONS: Magazine Capacity: 3+1 Crio® Flush Chokes: C,IM,F Crio® Extended Chokes: IC,M Type of Sights: Red-bar front sight Length of Pull: 14½" (Compact: 13½") Drop at Heel: 2¼" Drop at Comb: 1¼" Minimum recommended load: 3-dram, 1¼-oz. loads (12-ga.) †Receiver drilled and tapped for scope mounting & 93A Weaver base.

STANDARD FEATURES

EXTENDED CHOKE TUBES: IC, M, Crio® chokes.
FLUSH CHOKE TUBES: C, IM, F Crio® chokes and wrench.
FINISHES: Realtree® Max-7, Black synthetic, Mossy Oak® Bottomland,™ GORE™ OPTIFADE™ Timber, GORE™ OPTIFADE™ Timber/Tungsten Cerakote, GORE™ OPTIFADE™ Marsh/Patriot Brown Cerakote.
BARRELS: Crio®-treated barrel.
RECOIL PADS: Comfortech® 3 recoil pads and Combtch pads.
SHIM KIT: For adjustment of drop and cast.
HARD CASE: Custom fitted hard case to protect during transport.

OPTIONAL FEATURES

CHOKE TUBES: Extended Crio® chokes C, IM, F and XF for turkey.
COMFORTech 3 RECOIL PADS: Three options to customize length of pull to 13¾", 14¾" or 14¾".
COMB-TECH® RAISED COMB PADS: Two options to customize sight plane for different shooting scenarios.



GORE™ OPTIFADE™

SUPER BLACK EAGLE 3 – 12-GA, 3"
ITEM # 10317 Black synthetic



GORE™ OPTIFADE™

SUPER BLACK EAGLE 3 – 12-GA, 3"
ITEM # 10362 GORE™ OPTIFADE™ Waterfowl Timber



SUPER BLACK EAGLE 3 – 12-GA, 3"
ITEM # 10309 Realtree® Max-7™



SUPER BLACK EAGLE 3 COMPACT – 12-GA, 3"
ITEM # 11320 Black synthetic

SBE3

20 - GAUGE
3" CHAMBER



GORE
OPTIFADE™

SUPER BLACK EAGLE 3 – 20-GA, 3"
ITEM # 10342 GORE™ OPTIFADE™ Waterfowl Timber


INERTIA DRIVEN
SYSTEM


COMFORTECH 3

When wave after wave of ducks are settling into your decoys or flocks of low-flying doves come in one after another, you'll appreciate the lighter recoil of a 20-gauge shotgun. Benelli's Super Black Eagle shotguns have been dominating such situations for a generation, and the 20-gauge SBE3 is perfect for both high-volume shooters and hunters who are a bit more recoil sensitive. This shotgun delivers all the performance, reliability and comfort features of the 3.5"-chambered SBEs in a 20-gauge model able to shoot 3" and 2-3/4" shells. It's lightweight, smooth-swinging, quick and a joy to shoot all day long.



SUPER BLACK EAGLE 3 – 20-GA, 3"
ITEM # 11243 GORE™ OPTIFADE™ Waterfowl Timber, Tungsten Cerakote



SUPER BLACK EAGLE 3 – 20-GA, 3"
ITEM # 11242 GORE™ OPTIFADE™ Marsh, Patriot Brown Cerakote



SUPER BLACK EAGLE 3 – 20-GA, 3"
ITEM # 10349 Realtree® Max-7™



SUPER BLACK EAGLE 3 – 20-GA, 3"
ITEM # 10346 Mossy Oak® Bottomland™



SUPER BLACK EAGLE 3 COMPACT – 20-GA, 3"
ITEM # 11330 Black synthetic

SUPER BLACK EAGLE 3

ITEM NUMBER	BARREL LENGTH	FINISH	OVERALL LENGTH	AVERAGE WEIGHT	MSRP	
SUPER BLACK EAGLE 3 – 20-GAUGE 2 3/4" AND 3"						
10340	26"	Black synthetic	47.5"	5.8 lbs.	\$1949	
10341	28"	Black synthetic	49.5"	5.9 lbs.	\$1949	
10349	28"	Realtree® Max-7™	49.5"	5.9 lbs.	\$2049	
10346	26"	Mossy Oak® Bottomland™	47.5"	5.8 lbs.	\$2049	
10347	28"	Mossy Oak® Bottomland™	49.5"	5.9 lbs.	\$2049	
10342	26"	GORE™ OPTIFADE™ Timber	47.5"	5.8 lbs.	\$2049	
10343	28"	GORE™ OPTIFADE™ Timber	49.5"	5.9 lbs.	\$2049	
11242	28"	Marsh/Patriot Brown	49.5"	5.9 lbs.	\$2149	
11243	28"	Timber/Tungsten	49.5"	5.9 lbs.	\$2149	
NEW!	11252	24"	Bottomland/Orig. Pat. Brown	45.5"	5.7 lbs.	\$2149

SUPER BLACK EAGLE 3 COMPACT – 20-GAUGE 2 3/4" AND 3"

11330	26"	Black synthetic	46.25"	5.7 lbs.	\$1949
-------	-----	-----------------	--------	----------	--------

LH HAND LEFT-HAND SUPER BLACK EAGLE 3 – 20-GAUGE 2 3/4" AND 3"

NEW!	10373	28"	Black synthetic	49.5"	5.9 lbs.	\$1949
-------------	-------	-----	-----------------	-------	----------	--------

COMMON SPECIFICATIONS: Magazine Capacity: 3+1 Crio® Flush Chokes: C,IM,F Crio® Extended Chokes: IC,M Type of Sights: Red-bar front sight Length of Pull: 14 1/4" (Compact: 13 1/4") Drop at Heel: 2 1/4" Drop at Comb: 1 1/4" Min. recommended load: 2 1/2-dram, 7/8-oz. loads

STANDARD FEATURES

EXTENDED CHOKE TUBES: IC, M, Crio® chokes.
FLUSH CHOKE TUBES: C, IM, F Crio® chokes and wrench.
FINISHES: Realtree® Max-7, Black synthetic, Black synth./BE.S.T. Mossy Oak® Bottomland™, GORE™ OPTIFADE™ Timber, GORE™ OPTIFADE™ Timber/Tungsten Cerakote, GORE™ OPTIFADE™ Marsh/Patriot Brown Cerakote, Mossy Oak® Bottomland™ Original/Patriot Brown Cerakote
BARRELS: Crio®-treated barrel.
RECOIL PADS: Comfortech® 3 recoil pads and Combtech pads.
SHIM KIT: For adjustment of drop and cast.
HARD CASE: Custom fitted hard case to protect during transport.

OPTIONAL FEATURES

CHOKE TUBES: Extended Crio® chokes C, IM, F and XF for turkey.
COMFORTECH 3 RECOIL PADS: Three options to customize length of pull to 13 7/8", 14 3/8" or 14 3/4"
COMB-TECH® RAISED COMB PADS: Two options to customize sight plane for different shooting scenarios.

SBE 3

28 - GAUGE
3" CHAMBER



SUPER BLACK EAGLE 3 – 28-GA, 3"
ITEM # 10339 Realtree® Max-7™



**GORE™
OPTIFADE™**

SUPER BLACK EAGLE 3 – 28-GA, 3"
ITEM # 10333 GORE™ OPTIFADE™ Waterfowl Timber



MOSSY OAK™

SUPER BLACK EAGLE 3 – 28-GA, 3"
ITEM # 10337 Mossy Oak® Bottomland™



SUPER BLACK EAGLE 3 COMPACT – 28-GA, 3"
ITEM # 11340 Black synthetic

SUPER BLACK EAGLE 3

ITEM NUMBER	BARREL LENGTH	STOCK	OVERALL LENGTH	AVERAGE WEIGHT	MSRP	
SUPER BLACK EAGLE 3 – 28-GAUGE 2¾" AND 3"						
10330	26"	Black synthetic	47.25"	5.5 lbs.	\$1949	
10331	28"	Black synthetic	49.25"	5.6 lbs.	\$1949	
10339	28"	Realtree® Max-7™	49.25"	5.6 lbs.	\$2049	
10336	26"	Mossy Oak® Bottomland™	47.25"	5.5 lbs.	\$2049	
10337	28"	Mossy Oak® Bottomland™	49.25"	5.6 lbs.	\$2049	
10332	26"	GORE™ OPTIFADE™ Timber	47.25"	5.5 lbs.	\$2049	
10333	28"	GORE™ OPTIFADE™ Timber	49.25"	5.6 lbs.	\$2049	
NEW!	11250	28"	Marsh/Patriot Brown	49.5"	5.6 lbs.	\$2149
NEW!	11251	28"	Timber/Tungsten	49.5"	5.6 lbs.	\$2149
NEW!	11253	24"	Bottomland/Orig. Pat. Brown	45.5"	5.4 lbs.	\$2149
SUPER BLACK EAGLE 3 COMPACT – 28-GAUGE 2¾" AND 3"						
11340	26"	Black synthetic	46.25"	5.4 lbs.	\$1949	

COMMON SPECIFICATIONS: Magazine Capacity: 2+1 (24" 3+1) Crio® Flush Chokes: C, IM, F Crio® Extended Chokes: IC, M Type of Sights: Red-bar front sight Length of Pull: 14½" (Compact: 13¾") Drop at Heel: 2¼" Drop at Comb: 1¼" Min. recommended load: ¾-oz. loads (28-ga.)

STANDARD FEATURES

EXTENDED CHOKE TUBES: IC, M, Crio® chokes.
FLUSH CHOKE TUBES: C, IM, F Crio® chokes and wrench.
FINISHES: Realtree® Max-7™ Black synthetic, Mossy Oak® Bottomland™, GORE™ OPTIFADE™ Timber, GORE™ OPTIFADE™ Timber/Tungsten Cerakote, GORE™ OPTIFADE™ Marsh/Patriot Brown Cerakote, Mossy Oak® Bottomland™ Original/Patriot Brown Cerakote
BARRELS: Crio®-treated barrel.
RECOIL PADS: Comfortech™ 3 recoil pads and Combtech pads.
SHIM KIT: For adjustment of drop and cast.
HARD CASE: Custom fitted hard case to protect during transport.

OPTIONAL FEATURES

CHOKE TUBES: Extended Crio® chokes C, IM, F and XF for turkey.
COMFORTECH 3 RECOIL PADS: Three options to customize length of pull to 13¾", 14¾" or 14¾".
COMB-TECH® RAISED COMB PADS: Two options to customize sight plane for different shooting scenarios.



An upsized bolt handle teams with an enlarged bolt release and oversized safety to make operation easier with cold or gloved hands.



Each SBE 3 comes complete with two Crio extended chokes (one pre-installed), three flush-mount Crio chokes, a shim kit, a choke wrench and a custom-fitted hard case.

The sub-gauge wave is sweeping the hunting community, and Benelli is on top of it with this new 28-gauge offering of our renowned Super Black Eagle. If you hunt in an area that requires use of smaller gauges, or just want the added challenge they offer, this is the shotgun for you! It delivers all the rugged reliability, performance and shooting comfort of larger SBE-3s, along with all the Benelli technology and comfort features, in a super-light and fast-handling shotgun that's downright addicting to shoot. Available in your choice of three camo patterns or black. Shoots both 3" and 2-¾" shells.



All SBE 3 28-gauge models include a carbon-fiber rib and a fiber-optic red-bar front sight.



**YOU'LL BE MOST PLEASED.
UPLAND BIRDS WILL NOT.**

ETHOS

Benelli ETHOS shotguns are renowned for their fast handling, sleek good looks, and ability to put upland birds in your game pouch. Now they are even better with our Advanced Impact barrel system on select models. It used to be that you had to switch to magnum loads to bag those easily spooked late-season gamebirds, but no more. ETHOS shotguns outfitted with A.I. barrel systems give your favorite regular upland loads the extra velocity and energy needed to reach out and smack game breaking cover early. Up your percentages on upland game with a Benelli ETHOS shotgun and Advanced Impact today.



ETHOS Upland A.I. **NEW!**
Unrivaled Upland Shotgun




INERTIA DRIVEN SYSTEM

ETHOS UPLAND A.I. – 12-GA, 3"
ITEM #12646 AA-Grade satin walnut


BENELLI
ADVANCED IMPACT

BE.S.T.


CRIO SYSTEM



An enlarged bolt handle and bolt-release lever improve ease of operation, even with gloved hands.



The ETHOS Upland A.I. comes with five extended nickel/colored chokes, drop and cast shims for a custom fit, balance weights, a manual, a trigger tool, a choke wrench and oil.



The Ethos Upland comes with the Progressive Comfort recoil-reduction system. It is able to self-adjust for maximum recoil reduction related to the power of the load.

10
25

In addition to Benelli's industry-leading 10-year warranty, BE.S.T.-treated barrels and parts carry a warranty against rust and corrosion for 25 years from the date of purchase.

Benelli's ETHOS Upland series shotguns are now available with BE.S.T. barrels and our Advanced Impact barrel system, making these already superb firearms an upland hunter's dream. BE.S.T. barrels and components are backed by a 25-year warranty against corrosion. Advanced Impact increases energy and velocity while enhancing shot patterns for authoritative hits on game. Our Inertia Driven® System ensures fast, smooth cycling of shells ranging from light trap loads to magnum goose shells. Upgrades include an enlarged bolt handle and bolt-release lever. Experience Benelli ETHOS shotguns for unrivaled upland shooting performance.

NEW!

ETHOS UPLAND A.I.

ITEM NUMBER	BARREL LENGTH	STOCK	OVERALL LENGTH	AVERAGE WEIGHT	MSRP
ETHOS UPLAND A.I. 12-GAUGE 2¾" AND 3" †					
12646	28"	AA-Grade satin walnut	49.5"	6.9 lbs.	\$3099
ETHOS UPLAND A.I. 20-GAUGE 2¾" AND 3" †					
12651	28"	AA-Grade satin walnut	49.5"	5.9 lbs.	\$3099

COMMON SPECIFICATIONS: Magazine Capacity: 4+1 A.I. Extended Chokes: C, IC, M, IM, F Type of Sights: Fiber-optic front sight with red insert Length of Pull: 14¼" Drop at Heel: 2¼" Drop at Comb: 1¼" Minimum recommended load: ⅝-oz. loads

STANDARD FEATURES

- EXTENDED CHOKE TUBES:** C, IC, M, IM, F A.I. choke tubes and wrench.
- FINISH:** AA-Grade satin walnut.
- RECEIVER:** Anodized Grey
- BARREL:** Gloss Black BE.S.T.
- CHOKE:** Nickel-plated.
- PROGRESSIVE COMFORT:** Integrated recoil management.
- SHIM KIT:** For adjustment of drop and cast.
- HARD CASE:** Custom-fitted hard case to protect during transport.

OPTIONAL FEATURES

- CHOKE TUBES:** Extended black Crio® choke tubes C, IC, M, IM, F;
- RECOIL PADS/LOP SHIMS:** Progressive Comfort options

**Performance Shop
Ethos SuperSport A.I.**



ETHOS SUPERSPORT A.I. – 12-GA, 3"
ITEM #12616 Carbon-fiber finish

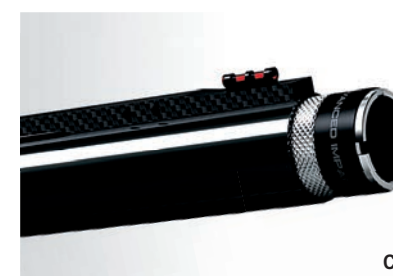
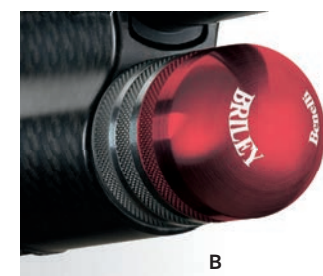


PERFORMANCE SHOP – ETHOS SUPERSPORT A.I.

ITEM NUMBER	BARREL LENGTH	STOCK	OVERALL LENGTH	AVERAGE WEIGHT	MSRP
ETHOS SUPERSPORT A.I. – 12-GAUGE 2¾" AND 3"					
12616	30"	Carbon-fiber finish	51.5"	7.0 lbs.	\$3399
NEW! ETHOS SUPERSPORT A.I. – 20-GAUGE 2¾" AND 3"					
12621	28"	Carbon-fiber finish	49.5"	5.9 lbs.	\$2849

COMMON SPECIFICATIONS: Barrel: Advanced Impact Crio® barrel Bolt: Briley® EZ bolt release and enlarged bolt-operating handle Recoil Reduction: Benelli Comfort Tech® 3 System with Briley® 6-oz. weighted forend cap Magazine Capacity: 4+1 Advanced Impact Extended Crio® Chokes: C, IC, M, IM, F Briley Spectrum A.I. Extended Chokes: SK, LM Type of Sights: Fiber-optic front sight with red insert and metal bead mid-sight Length of Pull: 14¼" Drop at Heel: 2½" Drop at Comb: 1⅜" Minimum recommended load: ¾-oz. loads. (Briley features are 12-ga. only)

SPECIFICATIONS AND PRICES SUBJECT TO CHANGE WITHOUT NOTICE.



The Performance Shop ETHOS SuperSport guns feature: A.) a Briley EZ bolt release and ergonomic bolt-operating handle; B.) a custom 6-ounce weighted forend cap for great forward balance; and C.) Advanced Impact extended, Crio choke tubes. (12-ga. only.)

**Ethos SuperSport
Big Performance, Small Recoil**



ETHOS SUPERSPORT – 12-GA, 3"
ITEM # 10631 Carbon-fiber finish

ETHOS SUPERSPORT – 20-GA, 3"
ITEM # 10633 Carbon-fiber finish

ETHOS SuperSport models feature ported barrels and extended chokes.

STANDARD FEATURES

- EXTENDED CHROME CHOKE TUBES:** C, IC, M, IM, F Crio® chokes.
- FINISH:** Carbon-fiber finish.
- RECEIVER:** Nickel-plated.
- BARREL:** Gloss blue, Ported.
- RECOIL PADS:** Comfort Tech® 3 recoil pads and Combtech pads.
- SHIM KIT:** For adjustment of drop and cast.
- SHELL VIEW**
- HARD CASE:** Custom-fitted hard case to protect during transport.

OPTIONAL FEATURES

- CHOKE TUBES:** Extended black Crio® choke tubes C, IC, M, IM, F; C, IC, M, IM, F Crio® flush choke tubes.
- COMFORTECH 3 RECOIL PADS:** Three options to customize length of pull to 13⅞", 14⅜" or 14¾"

ETHOS

The ETHOS SuperSport combines the excellence of our popular ETHOS Sport model with a new, lightweight, weather-resistant carbon-fiber finish for unmatched performance in any weather. The synthetic stock accommodates our Comfortech 3 recoil-reduction system that teams with a ported barrel to mitigate recoil and muzzle jump. A fiber-optic front sight with a red insert, combines with a mid-rib bead inside a sight channel atop the wide rib to offer instinctive aiming. A beveled loading port speeds reloading. Five extended choke tubes are included to facilitate quick changes in the heat of competition.

ETHOS SUPERSPORT

ITEM NUMBER	BARREL LENGTH	STOCK	OVERALL LENGTH	AVERAGE WEIGHT	MSRP
ETHOS SUPERSPORT – 12-GAUGE 2¾" AND 3"					
10631	28"	Carbon-fiber finish	49.5"	6.9 lbs.	\$2399
10632	30"	Carbon-fiber finish	51.5"	7.0 lbs.	\$2399
ETHOS SUPERSPORT – 20-GAUGE 2¾" AND 3"					
10633	28"	Carbon-fiber finish	49.5"	5.9 lbs.	\$2399

COMMON SPECIFICATIONS: Magazine Capacity: 4+1 Extended Crio® Chokes: C, IC, M, IM, F Type of Sights: Fiber-optic front sight with red insert Length of Pull: 14¼" Drop at Heel: 2½" Drop at Comb: 1⅜" Minimum recommended load: ¾-oz. loads SPECIFICATIONS AND PRICES SUBJECT TO CHANGE WITHOUT NOTICE.



A front fiber-optic and mid-barrel bead set in the Broadway sight channel on the carbon-fiber rib naturally guide your eye to the target shot after shot.

Performance Shop Ethos Sport A.I.



ETHOS SPORT A.I. – 12-GA, 3"
ITEM # 12601 AA-Grade satin walnut



Benelli's new Advanced Impact (A.I.) barrel technology and ETHOS series competition performance meets classical styling with the Performance Shop ETHOS Sport A.I. Offered in a 3-in. 12-ga. chamber and 30-in. barrel length, the ETHOS Sport A.I. boasts an exquisite AA-grade satin walnut forend and Progressive Comfort recoil reducing stock. Upgraded with a Briley EZ bolt release, ergonomic bolt handle, and a 6-oz. weighted forend cap to enhance forward balance, this shotgun sets new aesthetic and performance standards for the competition world.

ETHOS SPORT A.I.

ITEM NUMBER	BARREL LENGTH	STOCK	OVERALL LENGTH	AVERAGE WEIGHT	MSRP
ETHOS A.I. 12-GAUGE 2¾" AND 3" – NICKEL-PLATED RECEIVER					
12601	30"	AA-Grade satin walnut	51.5"	6.8 lbs.	\$3399

COMMON SPECIFICATIONS: Magazine Capacity: 4+1 Advanced Impact Extended Crio® Chokes: C, IC, M, IM, F Briley Spectrum A.I. Extended Chokes: SK, LM Type of Sights: Fiber-optic front sight with red insert and metal bead mid-sight Length of Pull: 14½" Drop at Heel: 2¼" Drop at Comb: 1½" Minimum recommended load: ¾-oz. loads.



Red anodized accents courtesy of Briley bolt controls and a 6-ounce weighted forend cap add form to function, ideally complimenting the Performance Shop ETHOS Sport A.I.'s classic wood-and-steel presentation. A.I. Crio® extended choke tubes in C, IC, M, IM, and F are included.

STANDARD FEATURES

EXTENDED CHOKE TUBES: Advanced Impact C, IC, M, IM, F Crio® chokes and Briley Spectrum Advanced Impact SK, IC chokes.
FINISH: AA-Grade satin walnut.
RECEIVER: Nickel-plated.
ADVANCED IMPACT BARREL: Gloss
SHIM KIT: For adjustment of drop and cast.
HARD CASE: Custom-fitted hard case to protect during transport.

OPTIONAL FEATURES

RECOIL PADS/LOP SHIMS: Progressive Comfort options

Ethos Sport A Clay-Busting Machine in an Elegant Package



ETHOS – 12-GA, 3"
ITEM # 10495 AA-Grade satin walnut

ETHOS – 20-GA, 3"
ITEM # 10455 AA-Grade satin walnut



ETHOS Sport

Benelli is a company of avid shotgunners who never stop thinking about new and innovative ways to make our products even better. The sporting version of the ETHOS perfectly embodies this "ethos." Using the popular field model as a basis, we refined the recoil-absorbing cheek-comb pad, raised the wide sporting rib, and outfitted the barrel with porting to get your second shot on target quickly. Available in 12- and 20-gauge models, it cycles even the lightest target loads (e.g., 7/8 oz. in 12-gauge).

ETHOS SPORT

ITEM NUMBER	BARREL LENGTH	STOCK	OVERALL LENGTH	AVERAGE WEIGHT	MSRP
ETHOS 12-GAUGE 2¾" AND 3" – NICKEL-PLATED RECEIVER					
10495	30"	AA-Grade satin walnut	51.5"	6.7 lbs.	\$2399
ETHOS 20-GAUGE 2¾" AND 3" – NICKEL-PLATED RECEIVER					
10455	28"	AA-Grade satin walnut	49.5"	5.7 lbs.	\$2399

COMMON SPECIFICATIONS: Magazine Capacity: 4+1 Extended Crio® Chokes: C, IC, M, IM, F Type of Sights: Fiber-optic front sight with red insert and metal bead mid-sight Length of Pull: 14½" Drop at Heel: 2¼" Drop at Comb: 1½" Minimum recommended load: ¾-oz. loads
SPECIFICATIONS AND PRICES SUBJECT TO CHANGE WITHOUT NOTICE.



Extended choke tubes optimize patterns and are quickly changed in the heat of competition. Porting minimizes barrel jump, and the high-visibility sight makes lining up your shot easy.

Performance Shop Ethos Cordoba A.I. BE.S.T.



ETHOS CORDOBA A.I. BE.S.T. – 12-GA, 3"
ITEM # 12631 Black synthetic



Developed for those who demand the most out of their firearms, the Performance Shop ETHOS Cordoba A.I. BE.S.T. blends the fine balance and reliable performance of the Performance Shop ETHOS Sport A.I. and ETHOS Supersport A.I. competition models with a rugged stock and finish that is ready to take on any adventure...in any weather. With its performance-enhanced Advanced Impact (A.I.) barrel profile and A.I. Crio choke system boosting velocity and energy as the shot moves away from the muzzle—all while offering denser and more uniform pellet distribution downrange—the Performance Shop ETHOS Cordoba A.I. BE.S.T. is a gamechanger. What's more, the sleek, black synthetic furniture and Benelli's BE.S.T. metal finish ensures this shotgun will withstand the harshest conditions.

PERFORMANCE SHOP ETHOS CORDOBA A.I.

ITEM NUMBER	BARREL LENGTH	STOCK	OVERALL LENGTH	AVERAGE WEIGHT	MSRP
ETHOS A.I. CORDOBA BE.S.T. – 12-GAUGE 2¾" AND 3"					
12631	28"	Black synthetic	49.5"	6.9 lbs.	\$3649

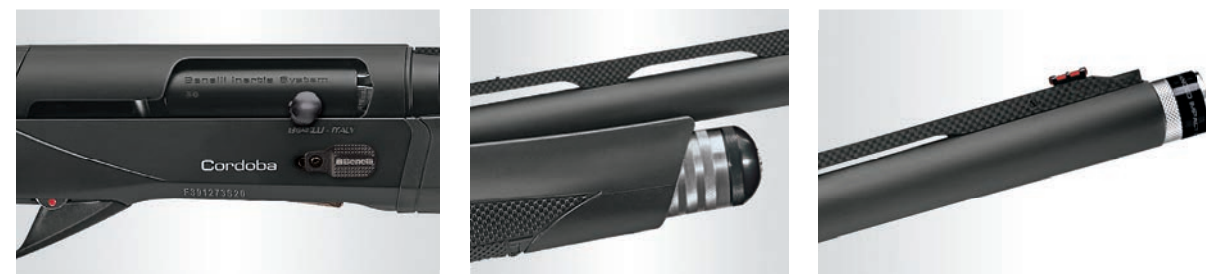
COMMON SPECIFICATIONS: Magazine Capacity: 4+1 Advanced Impact Extended Crio® Chokes: C, IC, M, IM, F Briley Spectrum A.I. Extended Chokes: SK, IC Type of Sights: Fiber-optic front sight with red insert and metal bead mid-sight Length of Pull: 14¼" Drop at Heel: 2½" Drop at Comb: 1½" Minimum recommended load: ¾-oz. loads.

STANDARD FEATURES

- EXTENDED CHOKE TUBES:** Advanced Impact C, IC, M, IM, F Crio® chokes and Briley Spectrum Advanced Impact SK, IC chokes..
- FINISH:** Black synthetic.
- RECEIVER:** Anodized.
- ADVANCED IMPACT BARREL:** Matte BE.S.T.-treated
- RECOIL PADS:** Comfort Tech® 3 recoil pads and Combtech pads.
- SHIM KIT:** For adjustment of drop and cast.
- SHELL VIEW**
- HARD CASE:** Custom-fitted hard case to protect during transport.

OPTIONAL FEATURES

- COMFORTTECH 3 RECOIL PADS:** Three options to customize length of pull to 13⅞", 14⅜" or 14¾"



Able to cycle a broad range of loads courtesy of Benelli's Inertia Driven System, the Performance Shop ETHOS Cordoba A.I. BE.S.T. has everything demanded by discerning shooters: a rust-, corrosion-, and abrasion-resistant finish, an ergonomic and recoil-reducing stock, comfortable cheek pad, over-sized controls, weighted mag cap, and a high-visibility fiber-optic front sight.

Ethos Cordoba BE.S.T. Where Style and Excellence Meet



ETHOS CORDOBA BE.S.T. – 12-GA, 3"
ITEM # 10641 Black synthetic

ETHOS CORDOBA BE.S.T. – 28-GA, 3"
ITEM # 10644 Black synthetic

BE.S.T.

ETHOS Cordoba BE.S.T. models feature ported barrels and BE.S.T. treated, extended chokes.

ETHOS CORDOBA

ITEM NUMBER	BARREL LENGTH	STOCK	OVERALL LENGTH	AVERAGE WEIGHT	MSRP
ETHOS CORDOBA BE.S.T. – 12-GAUGE 2¾" AND 3"					
10641	28"	Black synthetic	49.5"	6.9 lbs.	\$2599
ETHOS CORDOBA BE.S.T. – 20-GAUGE 2¾" AND 3"					
10643	28"	Black synthetic	49.5"	5.9 lbs.	\$2599
ETHOS CORDOBA BE.S.T. – 28-GAUGE 2¾" AND 3"					
10644	28"	Black synthetic	49.25"	5.4 lbs.	\$2599

COMMON SPECIFICATIONS: Magazine Capacity: 4+1 (2+1 28-Ga.) Extended Crio® Chokes: C, IC, M, IM, F Type of Sights: Fiber-optic front sight with red insert Length of Pull: 14¼" Drop at Heel: 2½" Drop at Comb: 1½" Minimum recommended load: ¾-oz. loads, ¾-oz. 28-ga. SPECIFICATIONS AND PRICES SUBJECT TO CHANGE WITHOUT NOTICE.

STANDARD FEATURES

- EXTENDED CHOKE TUBES:** C, IC, M, IM, F Crio® chokes.
- FINISH:** Black synthetic.
- RECEIVER:** Anodized.
- BARREL:** Matte BE.S.T.-treated, Ported
- SHIM KIT:** For adjustment of drop and cast.
- SHELL VIEW**
- HARD CASE:** Custom-fitted hard case to protect during transport.

OPTIONAL FEATURES

- CHOKE TUBES:** Extended nickel Crio® choke tubes C, IC, M, IM, F; C, IC, M, IM, F Crio® flush choke tubes.
- COMFORTTECH 3 RECOIL PADS:** Three options to customize length of pull to 13⅞", 14⅜" or 14¾"



A wide Broadway sight channel on the carbon-fiber rib of the ETHOS Cordoba BE.S.T. works with fiber-optic and mid-rib beads to guide your eye to the target quickly.

Sporting a sleek profile and equipped with the latest Benelli technology, our ETHOS Cordoba BE.S.T. shotguns deliver unmatched semiautomatic performance. Ported barrels team with our Comfortech® recoil-reduction system to make shooting a pleasurable experience. Our proven Inertia Driven® System ensures flawless reliability in any weather when cycling anything from heavy 3-inch 12-ga. magnums to the lightest ⅞ ounce loads. Each has a beveled loading port to promote fast reloading. A large bolt handle and enhanced trigger guard aid shooters wearing gloves. Benelli Surface Treatment (BE.S.T.) on external metal surfaces offers a level of protection from rust and corrosion that competing surface treatments can only aspire to.

Ethos

The Perfect Balance of Art and Technology



ETHOS – 28-GA, 3"
ITEM # 10480 AA-Grade satin walnut

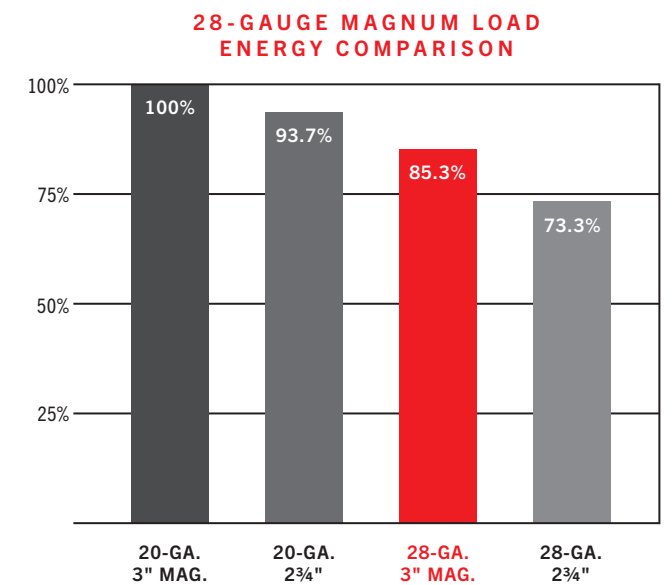
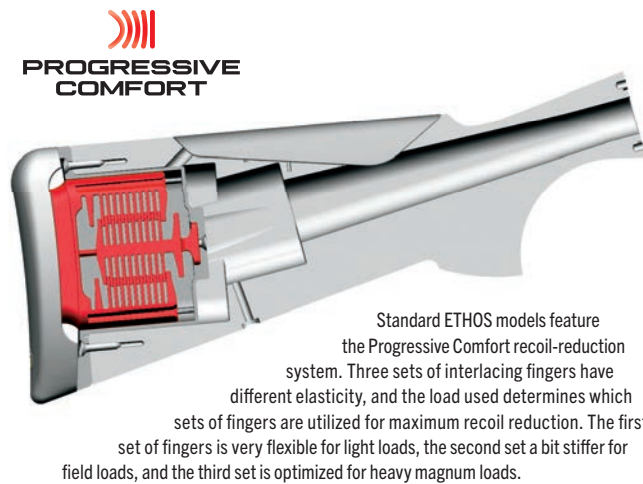
ETHOS



ETHOS – 12-GA, 3"
ITEM # 10461 AA-Grade satin walnut



ETHOS – 20-GA, 3"
ITEM # 10472 AA-Grade satin walnut



Benelli's dynamic design includes a patented easy-loading system that features a new two-part carrier latch, beveled loading port and redesigned carrier that ensures shells will glide into the magazine faster and easier. A new larger bolt release, easy access cartridge-drop lever and larger trigger guard promote quick handling, even when wearing gloves.

28-GAUGE, 3-INCH MAGNUM LOAD

This cartridge gives you the same velocity as a standard 2¾" 28-ga. load but with ¼ oz. more shot. The result is a 25% increase in knockdown power and 20% more pellets on target at 35 yards, giving you that extra edge for late-season birds. With the Progressive Comfort system of the ETHOS soaking up any additional recoil, you get the ballistic advantage of a 20-ga. in an easy handling 28-ga. package.

The ETHOS, an elegant semi-automatic shotgun, is the culmination of Benelli's latest innovations, refinements and design superiority, all centered around the core—our Inertia Driven® System. The ETHOS is built on a platform that combines form and function for improved ergonomics, the ability to cycle the lightest loads, even ⅞ ounce (12-ga.), and patented recoil systems to provide greater recoil reduction.

STANDARD FEATURES

- CHOKE TUBES:** C, IC, M, IM, F Crio® choke tubes and wrench.
- FINISH:** AA-Grade satin walnut.
- RECEIVER:** Engraved nickel-plated.
- SHIM KIT:** For adjustment of drop and cast.
- HARD CASE:** Custom-fitted hard case to protect during transport.

OPTIONAL FEATURES

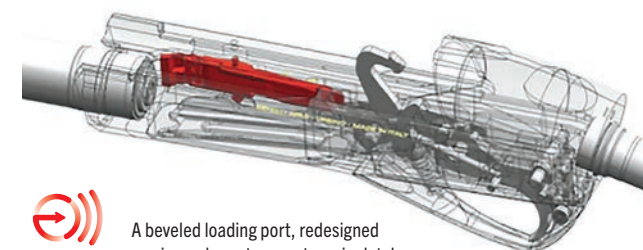
- CHOKE TUBES:** Extended chrome Crio® choke tubes C, IC, M, IM, F.
- RECOIL PADS/LOP SHIMS:** Progressive Comfort options

ETHOS

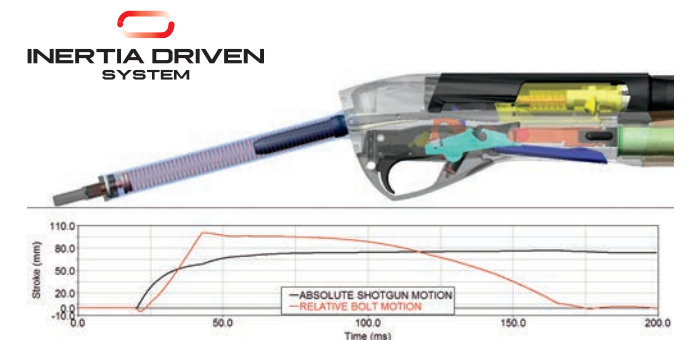
ITEM NUMBER	BARREL LENGTH	STOCK	OVERALL LENGTH	AVERAGE WEIGHT	MSRP
ETHOS 12-GAUGE 2¾" AND 3" – ENGRAVED NICKEL-PLATED RECEIVER					
10461	26"	AA-Grade satin walnut	47.5"	6.6 lbs.	\$2299
10462	28"	AA-Grade satin walnut	49.5"	6.7 lbs.	\$2299
ETHOS 20-GAUGE 2¾" AND 3" – ENGRAVED NICKEL-PLATED RECEIVER					
10471	26"	AA-Grade satin walnut	47.5"	5.6 lbs.	\$2299
10472	28"	AA-Grade satin walnut	49.5"	5.7 lbs.	\$2299
ETHOS 28-GAUGE 2¾" AND 3" – ENGRAVED NICKEL-PLATED RECEIVER					
10480	26"	AA-Grade satin walnut	47.25"	5.5 lbs.	\$2299

COMMON SPECIFICATIONS: Magazine Capacity: 4+1 (2+1 28-Ga.) Crio® Chokes: C, IC, M, IM, F
Type of Sights: Interchangeable fiber-optic front sight with red inserts Length of Pull: 14½"
Drop at Heel: 2¾" **Drop at Comb:** 1½" Minimum recommended load:
 ⅞-oz. loads, ¾-oz. 28-ga. *28-ga. does not have interchangeable sights.

SPECIFICATIONS AND PRICES SUBJECT TO CHANGE WITHOUT NOTICE.



EASY LOADING
A beveled loading port, redesigned carrier and new two-part carrier latch make loading the magazine effortless.



M2 Field

Workhorse Rugged with Thoroughbred Speed



M2 FIELD— 12-GA, 3"
ITEM # 11165 Realtree® Max-7™



Rugged, fast and relentlessly reliable, the M2 Field is the legendary workhorse of the Benelli line of semi-automatic shotguns. Known for its ability to flawlessly cycle everything from light 2¾" target loads to heavy 3" magnums, the M2 is a popular choice for waterfowlers and turkey hunters alike. Available in 12- and 20-gauge with 24-, 26-, or 28-inch barrels and a variety of synthetic stock options.



M2 FIELD – 12-GA, 3" ITEM # 11167 GORE™ OPTIFADE™ Waterfowl Timber



M2 FIELD – 12-GA, 3" ITEM # 11169 Mossy Oak® Bottomland™



M2 FIELD – 12-GA, 3" ITEM # 11162 Black Synthetic



STANDARD FEATURES

CHOKE TUBES: Crio® IC, M, F chokes and wrench.

FINISHES: Realtree® Max-7™, GORE™ OPTIFADE™ Timber, Mossy Oak® Bottomland™ or Black synthetic.

MICRO CELL RECOIL PAD: Helps reduce felt recoil.

SHIM KIT: For adjustment of drop and cast.

OPTIONAL FEATURES

CHOKE TUBES: Extended Crio® chokes C, IC, M, IM, F, XF.

MICRO CELL RECOIL PADS: Three options to customize length of pull to 13⅞", 14⅜" or 14¾".

SPECIFICATIONS AND PRICES

SUBJECT TO CHANGE WITHOUT NOTICE.

M2 FIELD 12-GAUGE

ITEM NUMBER	BARREL LENGTH	STOCK	OVERALL LENGTH	AVERAGE WEIGHT	MSRP
M2 FIELD 12-GAUGE 2¾" AND 3"					
11161	26"	Black synthetic	47.5"	6.7 lbs.	\$1549
11162	28"	Black synthetic	49.5"	6.8 lbs.	\$1649
11164	26"	Realtree® Max-7™	47.5"	6.7 lbs.	\$1649
11165	28"	Realtree® Max-7™	49.5"	6.8 lbs.	\$1649
11168	26"	Mossy Oak® Bottomland™	47.5"	6.7 lbs.	\$1649
11169	28"	Mossy Oak® Bottomland™	49.5"	6.8 lbs.	\$1649
11166	26"	GORE™ OPTIFADE™ Timber	47.5"	6.7 lbs.	\$1649
11167	28"	GORE™ OPTIFADE™ Timber	49.5"	6.8 lbs.	\$1649

COMMON SPECIFICATIONS: Magazine Capacity: 3+1 Crio® Chokes: IC, M, F Type of Sights: Red-bar front sight Length of Pull: 14⅞" (Compact: 13⅞") Drop at Heel: 2⅞" (Compact: 2") Drop at Comb: 1⅞" (Compact: 1⅞") Minimum recommended load: 3-dram, 1¼-oz. loads (12-ga.).

M2 Field 20-Gauge Models



M2 FIELD – 20-GA, 3"
ITEM # 11178 Realtree® Max-7™



GORE®
OPTIFADE™

M2 FIELD – 20-GA, 3" ITEM # 11180 GORE™ OPTIFADE™ Waterfowl Timber



M2 FIELD – 20-GA, 3" ITEM # 11176 Mossy Oak® Bottomland™



M2 FIELD – 20-GA, 3" ITEM # 11174 Black synthetic

M2 FIELD 20-GAUGE

ITEM NUMBER	BARREL LENGTH	STOCK	OVERALL LENGTH	AVERAGE WEIGHT	MSRP
M2 FIELD 20-GAUGE 2¾" AND 3"					
11184	24"	Black synthetic	45.5"	5.8 lbs.	\$1549
11173	26"	Black synthetic	47.5"	5.9 lbs.	\$1549
11174	28"	Black synthetic	49.5"	6.0 lbs.	\$1549
11177	26"	Realtree® Max-7™	47.5"	5.9 lbs.	\$1649
11178	28"	Realtree® Max-7™	49.5"	6.0 lbs.	\$1649
11175	26"	Mossy Oak® Bottomland™	47.5"	5.9 lbs.	\$1649
11176	28"	Mossy Oak® Bottomland™	49.5"	6.0 lbs.	\$1649
11179	26"	GORE™ OPTIFADE™ Timber	47.5"	5.9 lbs.	\$1649
11180	28"	GORE™ OPTIFADE™ Timber	49.5"	6.0 lbs.	\$1649
M2 FIELD COMPACT 20-GAUGE 2¾" AND 3"					
11172	24"	Black synthetic	44.25"	5.7 lbs.	\$1549
11182	24"	Realtree® Max-7™	44.25"	5.7 lbs.	\$1649
LEFT-HAND M2 FIELD CLASSIC STYLING 20-GAUGE 2¾" AND 3"					
11195	26"	Black synth., ComforTech™	47.5"	5.8 lbs.	\$1549

STANDARD FEATURES

CHOKE TUBES: Crio® IC, M, F chokes and wrench.
FINISHES: Realtree® Max-7™, GORE™ OPTIFADE™ Timber, Mossy Oak® Bottomland™ or Black synthetic.
MICRO CELL RECOIL PAD: Helps reduce felt recoil.
SHIM KIT: For adjustment of drop and cast.

OPTIONAL FEATURES

CHOKE TUBES: Extended Crio® chokes C, IC, M, IM, F, XF.
MICRO CELL RECOIL PADS: Three options to customize length of pull to 13⁷/₈", 14³/₈" or 14³/₄".



COMMON SPECIFICATIONS: Magazine Capacity: 3+1 Crio® Chokes: IC, M, F Type of Sights: Red-bar front sight Length of Pull: 14¹/₄" (Compact: 13³/₄") Drop at Heel: 2¹/₄" (Compact: 2¹/₄") Drop at Comb: 1¹/₂" (Compact: 1¹/₄") Minimum recommended load: 2¹/₂-dram, ¹/₄-oz. loads(20-ga.).



The corrosion-resistant recoil tube and stainless steel spring can be accessed easily by removing the quick-detachable ergonomic recoil pad.



Montefeltro

A Sleek, Fast-Shooting Classic



MONTEFELTRO – 20-GA, 3"
ITEM # 10885 Satin walnut



Our sharp-looking Montefeltro semi-automatic shotgun has been a favorite of upland hunters and clays shooters for years. Now it's available in six different configurations to suit shooters of all shapes, sizes and experience levels. Its sleek profile and handsome walnut stock pair nicely with the deep gloss-blue finish on the receiver and barrel. Built on Benelli's legendary Inertia-Driven® System, the Montefeltro offers outstanding performance and exceptional reliability. Choose 12- or 20-gauge, each of which comes in two barrel lengths and a compact model for small-statured shooters.



MONTEFELTRO – 12-GA, 3"
ITEM # 10881 Satin walnut

STANDARD FEATURES

CHOKE TUBES: IC, M, F Crio® choke tubes and wrench.
FINISH: Satin walnut.
MICRO CELL RECOIL PAD: Helps reduce felt recoil.
SHIM KIT: For adjustment of drop and cast.

OPTIONAL FEATURES

CHOKE TUBES: Extended Crio® chokes C, IC, M, IM, F, XFT

SPECIFICATIONS AND PRICES
SUBJECT TO CHANGE WITHOUT NOTICE.

MONTEFELTRO

ITEM NUMBER	BARREL LENGTH	STOCK	OVERALL LENGTH	AVERAGE WEIGHT	MSRP
MONTEFELTRO 12-GAUGE 2¾" AND 3"					
10881	26"	Satin walnut	47.5"	6.5 lbs.	\$1649
10882	28"	Satin walnut	49.5"	6.6 lbs.	\$1649
MONTEFELTRO 20-GAUGE 2¾" AND 3"					
10884	26"	Satin walnut	47.5"	5.8 lbs.	\$1649
10885	28"	Satin walnut	49.5"	5.9 lbs.	\$1649
MONTEFELTRO COMPACT 20-GAUGE 2¾" AND 3"					
10886	24"	Satin walnut	44.25"	5.3 lbs.	\$1649
LEFT-HAND MONTEFELTRO CLASSIC STYLING 12-GA. 2¾" AND 3"					
10864	28"	Satin walnut	49.5"	7.1 lbs.	\$1399



COMMON SPECIFICATIONS: Magazine Capacity: 4+1 Crio® Chokes: IC, M, F Type of Sights: Red-bar front sight Length of Pull: 14¼" (compact 12¼") Drop at Heel: 2¼" (compact 2¼") Drop at Comb: 1¼" Minimum recommended load: 3-dram, 1¼-oz. loads (12-ga.). 2¼-dram, ¾-oz. loads (20-ga.).



MONTEFELTRO

Montefeltro Sporting Smooth-Swinging, Fast-Shooting



MONTEFELTRO SPORTING – 20-GA, 3"
ITEM # 10896 A-Grade satin walnut

The perfect on-ramp to Benelli's renowned clay and field shotguns, the new Montefeltro Sporting combines an ergonomic, slim forend and exceptional balance with 30-in. (12-ga.) or 28-in. (20-ga.) barrels to deliver a clay and dove buster designed for comfortable, all-day shooting. The high-profile stepped vent rib and mid-bead allows an elevated hold, promoting good eye alignment and enhanced visibility on fast-moving targets while the ported barrel mitigates recoil for lightning-quick follow-up shots. Balanced for smooth, clean swings, the Montefeltro Sporting is your gateway to the Benelli experience.



MONTEFELTRO SPORTING – 12-GA, 3"
ITEM # 10891 A-Grade satin walnut

MONTEFELTRO SPORTING

ITEM NUMBER	BARREL LENGTH	STOCK	OVERALL LENGTH	AVERAGE WEIGHT	MSRP
MONTEFELTRO SPORTING 12-GAUGE 2¾" AND 3"					
10891	30"	A-Grade Satin walnut	51.5"	6.7 lbs.	\$1649
MONTEFELTRO SPORTING 20-GAUGE 2¾" AND 3"					
10896	28"	A-Grade Satin walnut	49.5"	5.9 lbs.	\$1649

COMMON SPECIFICATIONS: Magazine Capacity: 4+1 Extended Crio® Chokes: IC, M, F
Type of Sights: Red-bar front sight Length of Pull: 14¼" Drop at Heel: 2¼" Drop at Comb: 1½"
Minimum recommended load: 3-dram, 1¼-oz. loads (12-ga.). 2¼-dram, ¾-oz. loads (20-ga.).

STANDARD FEATURES

EXTENDED CHOKE TUBES: IC, M, F Crio® choke tubes and wrench.
FINISH: A-Grade satin walnut.
GLOSS PORTED CRIO BARREL
GLOSS BLACK ANODIZED RECEIVER
SHIM KIT: For adjustment of drop and cast.

OPTIONAL FEATURES

CHOKE TUBES: Extended Crio® choke tubes C, IM, Pass & Decoy.
Flush Crio® choke tubes C, IC, M, IM, F.

Montefeltro Ultra Light Featherweight Handling for Field and Bush



MONTEFELTRO ULTRA LIGHT – 12-GA, 3"
ITEM # 10911 AA-Grade satin walnut, WeatherCoat™

When enjoying long days on the prairie or scrambling through the grouse woods, veteran uplanders know that ounces equal pounds. That's why Benelli engineers developed the Montefeltro Ultra Light. Boasting a shortened mag tube and a carbon-fiber rib with 26-in. (12-ga.) and 24-in. (20-ga.) barrels, the Montefeltro Ultra Light features the Benelli Inertia Driven System, providing effortless cycling of even light loads to further reduce weight so you can stay in the game for "just one more."



MONTEFELTRO ULTRA LIGHT – 20-GA, 3"
ITEM # 10915 AA-Grade satin walnut, WeatherCoat™

MONTEFELTRO ULTRA LIGHT

ITEM NUMBER	BARREL LENGTH	STOCK	OVERALL LENGTH	AVERAGE WEIGHT	MSRP
MONTEFELTRO ULTRA LIGHT 12-GAUGE 2¾" AND 3"					
10911	26"	WeatherCoat™	47.6"	6.3 lbs.	\$2049
MONTEFELTRO ULTRA LIGHT 20-GAUGE 2¾" AND 3"					
10915	24"	WeatherCoat™	45.6"	5.3 lbs.	\$2049

COMMON SPECIFICATIONS: Magazine Capacity: 2+1 Crio® Chokes: C, IC, M
Type of Sights: Red-bar front sight Length of Pull: 14¼" Drop at Heel: 2¼" Drop at Comb: 1½"
Minimum recommended load: 3-dram, 1¼-oz. loads (12-ga.). 2¼-dram, ¾-oz. loads (20-ga.).

STANDARD FEATURES

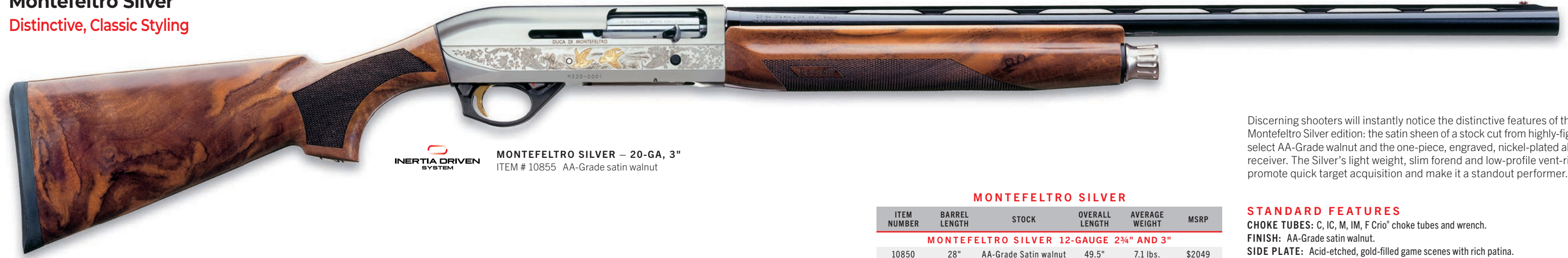
CHOKE TUBES: C, IC, M Crio® choke tubes and wrench.
FINISH: AA-Grade satin walnut, WeatherCoat™
GLOSS CRIO BARREL
GLOSS BLACK ANODIZED RECEIVER
SHIM KIT: For adjustment of drop and cast.

OPTIONAL FEATURES

CHOKE TUBES: Extended Crio® choke tubes C, IC, M, IM, F, Pass & Decoy.
Flush Crio® choke tubes IM, F.

Montefeltro Silver

Distinctive, Classic Styling



 **MONTEFELTRO SILVER – 20-GA, 3"**
ITEM # 10855 AA-Grade satin walnut



 **MONTEFELTRO SILVER – 12-GA, 3"**
ITEM # 10850 AA-Grade satin walnut

MONTEFELTRO SILVER

ITEM NUMBER	BARREL LENGTH	STOCK	OVERALL LENGTH	AVERAGE WEIGHT	MSRP
MONTEFELTRO SILVER 12-GAUGE 2 3/4" AND 3"					
10850	28"	AA-Grade Satin walnut	49.5"	7.1 lbs.	\$2049
MONTEFELTRO SILVER 20-GAUGE 2 3/4" AND 3"					
10855	26"	AA-Grade Satin walnut	47.5"	5.6 lbs.	\$2049

COMMON SPECIFICATIONS: Magazine Capacity: 4+1 Crio® Chokes: C,IC,M,IM,F Type of Sights: Red-bar front sight Length of Pull: 14 1/4" Drop at Heel: 2 1/4" Drop at Comb: 1 1/4" Minimum recommended load: 3-dram, 1 1/4-oz. loads (12-ga.). 2 1/4-dram, 7/8-oz. loads (20-ga.).

Discerning shooters will instantly notice the distinctive features of the Montefeltro Silver edition: the satin sheen of a stock cut from highly-figured, select AA-Grade walnut and the one-piece, engraved, nickel-plated alloy receiver. The Silver's light weight, slim forend and low-profile vent-rib promote quick target acquisition and make it a standout performer.

STANDARD FEATURES

- CHOKE TUBES:** C, IC, M, IM, F Crio® choke tubes and wrench.
- FINISH:** AA-Grade satin walnut.
- SIDE PLATE:** Acid-etched, gold-filled game scenes with rich patina.
- SHIM KIT:** For adjustment of drop and cast.
- HARD CASE:** Custom-fitted hard case to protect during transport.

OPTIONAL FEATURES

- CHOKE TUBES:** Extended Crio® choke tubes C, IC, M, IM, F, Pass & Decoy.

Montefeltro Silver Featherweight



 **MONTEFELTRO SILVER FW – 20-GA, 3"**
ITEM # 10819 AA-Grade satin walnut with WeatherCoat™



 **MONTEFELTRO SILVER FW – 12-GA, 3"**
ITEM # 10818 AA-Grade satin walnut with WeatherCoat™

MONTEFELTRO SILVER FEATHERWEIGHT

ITEM NUMBER	BARREL LENGTH	STOCK	OVERALL LENGTH	AVERAGE WEIGHT	MSRP
MONTEFELTRO SILVER 12-GAUGE 2 3/4" AND 3"					
10818	26"	WeatherCoat™	47.5"	6.2 lbs.	\$2299
MONTEFELTRO SILVER 20-GAUGE 2 3/4" AND 3"					
10819	24"	WeatherCoat™	45.6"	5.3 lbs.	\$2299

COMMON SPECIFICATIONS: Magazine Capacity: 2+1 Extended Crio® Chokes: C,IC,M, IM F Type of Sights: Red-bar front sight Length of Pull: 14 1/4" Drop at Heel: 2 1/4" Drop at Comb: 1 1/4" Minimum recommended load: 3-dram, 1 1/4-oz. loads (12-ga.). 2 1/4-dram, 7/8-oz. loads (20-ga.).

We combined the best features of the Standard Ultralight and Montefeltro Silver shotguns to create these light, quick-handling masterpieces. Satin walnut stocks are treated with weather-resistant WeatherCoat™ and joined with handsome engraving on nickel receivers and blued barrels.

STANDARD FEATURES

- CHOKE TUBES:** C, IC, M, IM, F Extended Crio® (Chrome) chokes and wrench.
- FINISH:** AA-Grade satin walnut with WeatherCoat™
- SIDE PLATE:** Acid-etched, gold-filled game scenes with rich patina.
- SHIM KIT:** For adjustment of drop and cast.
- HARD CASE:** Custom-fitted hard case to protect during transport.

OPTIONAL FEATURES

- CHOKE TUBES:** Extended Crio® choke tubes C, IC, M, IM, F, Pass & Decoy.



EXPERIENCE THE APEX OF OVER/UNDER INNOVATION

828U

Benelli redefined the over/under shotgun when we introduced our 828U nine years ago. We demonstrated that over/unders could be lighter, quicker handling, less complex, more robust, and more pleasant to shoot than anyone had previously imagined. Innovations such as lever-actuated re-cocking, an impulse-activated ejector system that's contained completely in the barrels, a patented, super-strong steel locking system, and our recoil-reducing Progressive Comfort System made discerning upland game hunters take to the 828U like pheasants to a corn pile. All these features in shotguns weighing less than 7 lbs. set a new standard for hunting shotguns. Nearly a decade later, competitors have yet to match the 828U in handling, comfort, and shooting performance.

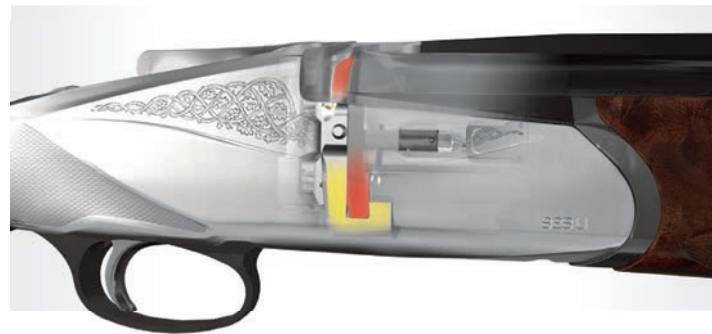


828 U

A shotgun built on imagination, not on past inspiration.



The first O/U inspired by innovation that breaks the traditional mold.



Opening lever

The 828U strikers reset when the top lever is unlocked, instead of when the barrels open as in traditional O/U's. This creates a smoother, more consistent opening action. Left-hand models are now available, which include a left-handed opening lever.



Steel locking plate

The heart of Benelli's Steel Locking System is a solid steel breech block that locks directly to the rear of the barrel. This contains all pressure from the shotshell inside and prevents its transfer to the receiver and hinge pins.

Steel locking system

Benelli's patented steel locking system eliminates wear and tear on the receiver and hinge that can cause traditional O/U's to fail. By incorporating this locking system into an aluminum receiver, we created a stronger, safer, lighter O/U that's perfectly balanced and weighs only 6.5 pounds.



Impulse-activated ejectors

The ejector system in the 828U is entirely contained on the barrel. Pressure activates the ejector when the shell is fired. This innovative design eliminates need for linkages between the trigger group and the forend, resulting in a stronger, more streamlined ejector system.



Adjustable drop and cast

Benelli has created the first O/U that allows for a custom-fit stock. With five drop and four cast shims, the 828U can be adjusted to one of 40 possible stock positions. The adjustable stock allows shooters to find natural alignment with the barrel and target, which results in superior accuracy.



Removable trigger group

The compact and removable trigger group makes for easier cleaning and eliminates complicated linkage between the forearm and trigger mechanism, significantly increasing reliability.



PROGRESSIVE COMFORT

Progressive Comfort and the 828U

The Progressive Comfort System is housed within the 828U's walnut stock. The progressive nature of the system allows for consistently smooth levels of recoil absorption with all shotshell loads, light or heavy.

Stage 1 of recoil

When a light load is fired, the first set of buffers (shown in yellow) engages and compresses to absorb recoil energy.



Stage 2 of recoil

When firing more powerful shells (heavy field loads), the second set of buffers (shown in orange) engages after the first set has compressed to absorb more recoil.



Stage 3 of recoil

The third and most rigid set of buffers (shown in red) comes into play when a magnum load is fired, providing a final layer of cushioning from recoil produced by the heaviest shotshell loads.



828U

Ultimate Integration of Design, Comfort and Technology



828U – 20-GA, 3"
ITEM # 10741 AA-Grade satin walnut

 PROGRESSIVE COMFORT

 LOCK PLATE

 PERFECT FIT

828U



828U – 12-GA, 3"
ITEM # 10702 AA-Grade satin walnut

828U

ITEM NUMBER	BARREL LENGTH	STOCK	OVERALL LENGTH	AVERAGE WEIGHT	MSRP
12-GAUGE 2 3/4" & 3" – ENGRAVED NICKEL-PLATED RECEIVER					
10701	26"	AA-Grade satin walnut	43.75"	6.5 lbs.	\$3799
10702	28"	AA-Grade satin walnut	45.75"	6.6 lbs.	\$3799
10703	26"	AA-Grade satin walnut	43.75"	6.5 lbs.	\$3799
10704	28"	AA-Grade satin walnut	45.75"	6.6 lbs.	\$3799
10705	30"	AA-Grade satin walnut	47.75"	6.7 lbs.	\$3799
10706	30"	AA-Grade satin walnut	47.75"	6.7 lbs.	\$3799

COMMON SPECIFICATIONS: Crio® Chokes: C, IC, M, IM, F Type of Sights: Fiber-optic front sight with red insert Length of Pull: 14 1/2" Drop at Heel: 2 1/2" Drop at Comb: 1 1/2"

STANDARD FEATURES

CHOKE TUBES: C, IC, M, IM, F Crio® choke tubes and wrench.
FINISH: AA-Grade satin walnut.
BARRELS: Gloss Blue Crio Barrels.
RECEIVER: Engraved nickel-plated or black anodized.
SHIM KIT: Forty points of fine adjustment of drop and cast for custom fit.
HARD CASE: Custom-fitted hard case to protect during transport.

OPTIONAL FEATURES

CHOKE TUBES: Extended chrome Crio® choke tubes C, IC, M, IM, F.

ITEM NUMBER	BARREL LENGTH	STOCK	OVERALL LENGTH	AVERAGE WEIGHT	MSRP
20-GAUGE 2 3/4" & 3" – BLACK ANODIZED RECEIVER					
NEW! 10746	28"	AA-Grade satin walnut	45.75"	6.0 lbs.	\$3199
20-GAUGE 2 3/4" & 3" – ENGRAVED NICKEL-PLATED RECEIVER					
10740	26"	AA-Grade satin walnut	43.75"	5.9 lbs.	\$3799
10741	28"	AA-Grade satin walnut	45.75"	6.0 lbs.	\$3799

COMMON SPECIFICATIONS: Crio® Chokes: C, IC, M, IM, F Type of Sights: Fiber-optic front sight with red insert Length of Pull: 14 1/2" Drop at Heel: 2 1/2" Drop at Comb: 1 1/2"

STANDARD FEATURES

CHOKE TUBES: C, IC, M, IM, F Crio® choke tubes and wrench.
FINISH: AA-Grade satin walnut.
RECEIVER: Engraved nickel-plated or black anodized.
SHIM KIT: Forty points of fine adjustment of drop and cast for custom fit.
HARD CASE: Custom-fitted hard case to protect during transport.

OPTIONAL FEATURES

CHOKE TUBES: Extended chrome Crio® choke tubes C, IC, M, IM, F.

A shotgun that feels and shoots like a Benelli from the moment you pick it up to the moment your target falls.

Innovation and inspiration combined to create the 828U – the first O/U worthy of the Benelli badge. With the strength of steel and the light weight of aluminum, the 12-gauge 828U redefined the upland game shotgun category. Now also available in 20-gauge.

The 828U features a patented steel locking system and plate, which eliminates the transference of stress-causing shot pressure to the receiver and hinge pins. A compact, easily removable trigger group increases safety, reliability and ease of cleaning. The unique opening lever provides a smoother, more consistent opening action. From butt to muzzle, there is nothing conventional about the Benelli 828U.



828U Sport

A Leader in Performance and Innovation

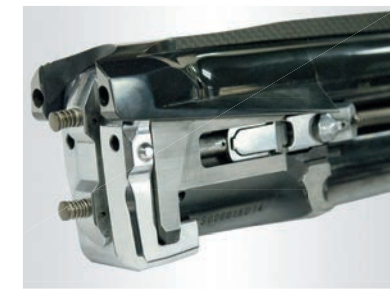


828U

Benelli delivers innovative performance advantages in its 828U Sport. A patented steel locking system reduces wear on the receiver and hinge, a point where lesser break-action guns fail. Integrated adjustment capability helps you tailor the balance point for optimal performance. Tune the trigger position to your finger length. A sight channel in the wide rib over anti-glare barrels aids fast target alignment with the white bead sight. Cryogenic barrel and choke treatment results in consistent patterns and more pellets on target. These enhancements and more make the 828U Sport a standout among sporting over/under shotguns.



The 828U Sport's trigger can be moved forward or backwards so your finger sits exactly where you want. Customize it to your finger length.



A patented steel locking system delivers consistently reliable lock-ups while eliminating wear and tear on the receiver hinges - a vulnerability in shotguns costing far more.



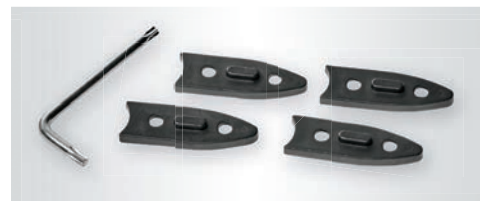
Each 828U Sport comes with five extended nickel/colored chokes, drop and cast shims for a custom fit, balance weights, a manual, a trigger tool, a choke wrench and oil.



828U SPORT – 12-GA, 3"
ITEM #10730 Matte blued steel,
AA-Grade Satin walnut

Progressive Balancing

A balanced shotgun is essential for consistent performance. Our engineers created an innovative adjustable balance system using small weights in the buttstock. Add or remove them to move the gun's center of balance fore or aft.



828U SPORT

ITEM NUMBER	BARREL LENGTH	STOCK	OVERALL LENGTH	AVERAGE WEIGHT	MSRP
12-GAUGE 2 3/4" & 3"					
10730	30"	AA-Grade satin walnut	47.75"	8.05 lbs.	\$4799
10731	32"	AA-Grade satin walnut	49.75"	8.15 lbs.	\$4799

COMMON SPECIFICATIONS: Extended Crio® Chokes: C, IC, M, IM, F Type of Sights: White bead front sight Length of Pull: 14 1/4" Drop at Heel: 2 1/4" Drop at Comb: 1 1/2" Automatic Ejectors

SPECIFICATIONS AND PRICES SUBJECT TO CHANGE WITHOUT NOTICE.

STANDARD FEATURES

EXTENDED CHOKE TUBES: C, IC, M, IM, F Crio® choke tubes and wrench.
FINISH: AA-Grade satin walnut.
RECEIVER: Matte blued steel with "SPORT" engraved.
SHIM KIT: Forty points of fine adjustment of drop and cast for custom fit.
HARD CASE: Custom-fitted hard case to protect during transport.

ADJUSTABLE TRIGGER POSITION

OPTIONAL FEATURES

CHOKE TUBES: Flush chrome Crio® choke tubes C, IC, M, IM, F.

828U Steel Field

Smooth-Shooting Excellence Defined



828U STEEL FIELD – 12-GA, 3"
ITEM #10751 Brushed gray/gloss blue, AA-Grade Satin walnut



828 U

This new version of our already superb 828U is outfitted with a sleek steel receiver that adds just enough weight to help mitigate the recoil of heavier upland loads and deliver a smooth, even swing on fast crossing shots. The handsome brushed gray receiver and gloss-finished barrels provide an elegant look in the field or on the clays range and the Progressive Comfort System contained within the striking AA-Grade walnut stock makes shooting the 828U a joy. Our patented, rock-solid steel locking system, top lever trigger reset and an ejector system contained entirely inside the barrels round out the innovations on this outstanding firearm. The 12-gauge is available with 26-, 28- or 30-inch barrels and the 20-gauge is available with 26- or 28-inch barrels.

828U STEEL FIELD

ITEM NUMBER	BARREL LENGTH	STOCK	OVERALL LENGTH	AVERAGE WEIGHT	MSRP
12-GAUGE 2¾" & 3" – BRUSHED GRAY STEEL RECEIVER					
10750	26"	AA-Grade satin walnut	43.25"	7.6 lbs.	\$3799
10751	28"	AA-Grade satin walnut	45.25"	7.7 lbs.	\$3799
10752	30"	AA-Grade satin walnut	47.25"	7.8 lbs.	\$3799
20-GAUGE 2¾" & 3" – BRUSHED GRAY STEEL RECEIVER					
10755	26"	AA-Grade satin walnut	43.25"	6.9 lbs.	\$3799
10756	28"	AA-Grade satin walnut	45.25"	7.0 lbs.	\$3799

COMMON SPECIFICATIONS: Crio® Chokes: C, IC, M, IM, F Type of Sights: Fiber-optic front sight with red insert Length of Pull: 14¾" Drop at Heel: 2½" Drop at Comb: 1½" Shell Ejectors



828U STEEL FIELD – 20-GA, 3"
ITEM #10756 Brushed gray/gloss blue, AA-Grade Satin walnut

STANDARD FEATURES

CHOKE TUBES: C, IC, M, IM, F Crio® choke tubes and wrench.
FINISH: AA-Grade satin walnut.
STEEL RECEIVER: Brushed gray, gold inlaid engraving.
SHIM KIT: Forty points of fine adjustment of drop and cast for custom fit.
HARD CASE: Custom-fitted hard case to protect during transport.

OPTIONAL FEATURES

CHOKE TUBES: Extended chrome Crio® choke tubes C, IC, M, IM, F.

Benelli's patented steel locking system eliminates wear and tear on the receiver and hinge that can cause traditional O/U's to fail. By incorporating this locking system into our steel receiver, we have created a stronger, safer O/U that's smooth swinging and perfectly balanced.



Performance Shop

Optimized For Quick-Shooting Accuracy



828U UPLAND – 12-GA, 3"
ITEM #10700 Anodized bronze/matte blue, AA-Grade Satin walnut



828 U



Enjoy the benefits of a superb 828U over/under optimized for fast handling and accuracy. The slightly shorter length of pull and 24-inch barrels promote control and speed. Lengthened forcing cones team with included Triple Threat® chokes to produce tighter patterns over longer ranges. With the 12-gauge weighing in at less than 6.5 lbs. and the 20-gauge tipping the scales at just 5.8 lbs., these guns are a joy to carry all day. Shells are partially extracted, not ejected, for complete control of loading and unloading. Carbon-fiber stepped rib with easy-to-see fiber-optic front sight. Tang-mounted automatic safety with barrel selector can be made into a manual safety. Included shims facilitate dozens of adjustments for a custom fit. Comes with a total of eight chokes.

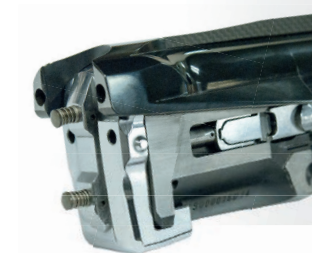
PERFORMANCE SHOP – 828U UPLAND

ITEM NUMBER	BARREL LENGTH	STOCK	OVERALL LENGTH	AVERAGE WEIGHT	MSRP
12-GAUGE 2¾" & 3" – BRONZE ANODIZED RECEIVER					
10700	24"	AA-Grade satin walnut	41.25"	6.4 lbs.	\$3999
20-GAUGE 2¾" & 3" – BRONZE ANODIZED RECEIVER					
10712	24"	AA-Grade satin walnut	41.25"	5.8 lbs.	\$3999

COMMON SPECIFICATIONS: Crio® Chokes: C, IC, M, IM, F Type of Sights: Fiber-optic front sight with red insert Length of Pull: 14¾" Drop at Heel: 2½" Drop at Comb: 1½" Shell Extractors



The compact and removable trigger group makes for easier cleaning and eliminates complicated linkage between the forearm and trigger mechanism, significantly increasing reliability.



Benelli's patented steel locking system eliminates wear and tear on the receiver and hinge that can cause traditional O/U's to fail. By incorporating this locking system into an aluminum receiver, we created a stronger, safer, lighter O/U that's perfectly balanced and weighs only 6.4 pounds.



The 828U Performance Shop Upland includes five flush choke tubes plus the Triple Threat® Series Choke System, which consists of the T1 (close-range), T2 (mid-range) and T3 (long-range) extended chokes.

Turkey Guns

Specifically Designed For Chasing Gobblers



SBE 3 STEADYGRIP™ – 12-GA, 3½"
ITEM # 10352 Mossy Oak® Bottomland™

 INERTIA DRIVEN SYSTEM



The SBE3 features a SteadyGrip™ stock which ensures a rock-solid grip in any weather and contributes to the outstanding accuracy of our turkey shotguns.



NOVA PUMP – 20-GA, 3"
ITEM #20042 Mossy Oak® Bottomland™



NOVA PUMP COMPACT – 20-GA, 3"
ITEM #20036 Black synthetic



SBE 3 PERFORMANCE SHOP TURKEY EDITION – 12-GA, 3½"
ITEM #11352 Mossy Oak® Bottomland™

STANDARD FEATURES

CHOKE TUBES: IC, M, F, Mobil choke tubes and wrench.
FINISHES: Mossy Oak® Bottomland™, Black synthetic.
DRILLED & TAPPED: Nova 3, and SuperNova
Receivers are drilled and tapped for scope mounting.

NOVA & SUPER NOVA PUMP TURKEY GUNS

ITEM NUMBER	BARREL LENGTH	STOCK	OVERALL LENGTH	AVERAGE WEIGHT	MSRP
NOVA 3 PUMP 12-GAUGE 2¾" AND 3"					
20500	26"	Black synthetic	47.5"	6.6 lbs.	\$529
20520	26"	Mossy Oak® Bottomland™	47.5"	6.6 lbs.	\$629
NOVA PUMP 20-GAUGE 2¾" AND 3"					
20043	24"	Mossy Oak® Bottomland™	45.5"	6.5 lbs.	\$629
20042	26"	Mossy Oak® Bottomland™	47.5"	6.6 lbs.	\$629
NOVA PUMP COMPACT 20-GAUGE 2¾" AND 3"					
20036	24"	Black synthetic	44.2"	6.4 lbs.	\$529

COMMON SPECIFICATIONS: Magazine Capacity: 4+1 Chokes: IC, M, F Type of Sights: Red-bar front sight Length of Pull: 14½" (Nova 3 14¼"; Compact 13") Drop at Heel: 2¼" (Nova 3 2¼"; Compact 2") Drop at Comb: 1¼" (Nova 3 1¼")

Benelli's turkey shotguns are packed with features serious turkey hunters desire. From gobbler-dropping accuracy and power to recoil-dampening ComforTech™ stock technology and the rock-solid grip afforded by SteadyGrip™ stocks, our turkey shotguns consistently deliver reliable performance you can count on in any weather.

TURKEY GUNS with SteadyGrip™

ITEM NUMBER	BARREL LENGTH	STOCK	OVERALL LENGTH	AVERAGE WEIGHT	MSRP
PERFORMANCE SHOP SBE 3 TURKEY† 12-GAUGE 2¾", 3" AND 3½"					
11352	24"	Mossy Oak® Bottomland™	46"	6.8 lbs.	\$3399
SUPER BLACK EAGLE 3† 12-GAUGE 2¾", 3" AND 3½"					
10352	24"	Mossy Oak® Bottomland™	46"	6.8 lbs.	\$2349

COMMON SPECIFICATIONS: Magazine Capacity: 3+1 Crio® Flush Chokes: C, IM, F and extended IC, M; (SBE3 Perf. Shop Turkey also includes a Rob Roberts XFT extended choke) Type of Sights: Red-bar front sight Length of Pull: 14½" Drop at Heel: 2¼" Drop at Comb: 1¼" Minimum recommended load: 3-dram, 1¼-oz. loads (12-ga.) †Receiver drilled and tapped for 93A Weaver base.

TURKEY GUNS

ITEM NUMBER	BARREL LENGTH	STOCK	OVERALL LENGTH	AVERAGE WEIGHT	MSRP
SUPER BLACK EAGLE 3† 12-GAUGE 2¾", 3" AND 3½"					
10350	26"	Mossy Oak® Bottomland™	48"	6.9 lbs.	\$2299
SUPER BLACK EAGLE 3 – 20-GAUGE 2¾" AND 3"					
NEW! 11252	24"	Bottomland/Pat. Brown	45.5"	5.7 lbs.	\$2149
10346	26"	Mossy Oak® Bottomland™	47.5"	5.8 lbs.	\$2049
SUPER BLACK EAGLE 3 – 28-GAUGE 2¾" AND 3"					
NEW! 11253	24"	Bottomland/Pat. Brown	45.5"	5.4 lbs.	\$2149
10336	26"	Mossy Oak® Bottomland™	47.25"	5.5 lbs.	\$2049
M2 FIELD 12-GAUGE 2¾" AND 3"					
11168	26"	Mossy Oak® Bottomland™	47.5"	6.7 lbs.	\$1649
M2 FIELD 20-GAUGE 2¾" AND 3"					
11184	24"	Black synthetic	45.5"	5.8 lbs.	\$1549
11175	26"	Mossy Oak® Bottomland™	47.5"	5.9 lbs.	\$1649

COMMON SPECIFICATIONS: Magazine Capacity: 3+1 Crio® Chokes: (SBE3 Chokes: C, IC, M, IM, F and extended IC, M; M2 Chokes: IC, M, F) Type of Sights: Red-bar front sight Length of Pull: 14½" Drop at Heel: 2¼" (SBE3 2¼") Drop at Comb: 1¼" †Receiver drilled and tapped for 93A Weaver base.

SPECIFICATIONS AND PRICES SUBJECT TO CHANGE WITHOUT NOTICE.





PROFESSIONALS RELY ON THE M4 – SO CAN YOU

m4

Military, law enforcement, security and personal protection. There's no coming in second in these lines of work, which is why the Benelli M4 is the shotgun of choice for many working in them. Rugged, fast and relentlessly reliable, the M4 has been battle-tested in some of the harshest environments in the world. They use the same piston-driven Auto-Regulating Gas-Operated (A.R.G.O.) system that was designed for and approved by the U.S. Marine Corps. Ghost-ring sights facilitate quick target acquisition, and there's a top rail for mounting optics, a laser, or a light. The M4's accuracy with both shells and slugs is legendary. There's no better choice for home defense and tactical shooting.

M4 Tactical

Reliability When It Counts The Most



M4 Tactical



M4, TACTICAL STOCK – 12-GA, 3"
ITEM # 11703 Black synthetic, Ghost-ring sight

M4 H₂O, PISTOL GRIP – 12-GA, 3"
ITEM # 11794 Black synthetic, Titanium Cerakote finish, Ghost-ring sight

Benelli's M4 Tactical is a unique Auto Regulating Gas-Operated (A.R.G.O) semi-automatic shotgun, upon which the U.S. Marine Corps depends. The M4 Tactical comes standard with a Picatinny rail and tactical stock. Other features include a fully adjustable ghost-ring aperture rear sight and windage-adjustable front sight. The M4 is also available with a durable, weather-beating Titanium Cerakote finish.

M4 STANDARD FEATURES

CHOKE TUBES: M.
FINISHES: Black synthetic. Titanium Cerakote.
SIGHTS: Ghost-ring.
DRILLED & TAPPED
PICATINNY RAIL

M4 OPTIONAL FEATURES

TRITIUM INSERTS: Three-dot tritium inserts available for ghost-ring sights.

M4 TACTICAL

ITEM NUMBER	BARREL LENGTH	STOCK	FINISH	OVERALL LENGTH	AVERAGE WEIGHT	MSRP
M4 H₂O TACTICAL†, CERAKOTE FINISH 12-GAUGE 2¾" AND 3"						
11794	18.5"	Pistol Grip	Titanium Cerakote	40"	7.8 lbs.	\$2399
11795	18.5"	Tactical Stock	Titanium Cerakote	40"	7.8 lbs.	\$2399
M4 TACTICAL† 12-GAUGE 2¾" AND 3"						
11707	18.5"	Pistol Grip	Black synthetic	40"	7.8 lbs.	\$2299
11703	18.5"	Tactical Stock	Black synthetic	40"	7.8 lbs.	\$2299

COMMON SPECIFICATIONS: Magazine Capacity: 5+1 Chokes: M Type of Sights: Ghost-ring Length of Pull: 14¼" Drop at Heel: 2¼" Drop at Comb: 1½" †Receiver drilled and tapped for scope mount. Synthetic stock. Picatinny rail is included.

SPECIFICATIONS AND PRICES SUBJECT TO CHANGE WITHOUT NOTICE.

M1014



M1014, FIXED-POSITION SKELETONIZED STOCK – 12-GA, 3"
ITEM # 11701 Black synthetic, Anti-reflective MILSPEC finish, Ghost-ring sight

A civilian version of the shotgun used by the U.S. Marine Corps in combat theaters around the world, the Benelli M1014 sets the standard for military shotgun performance and reliability. The Benelli M1014 comes standard with a fixed-position skeletonized stock with a pistol grip, and separate cheek piece. All the external surfaces are protected with an anti-reflective MILSPEC finish.

M1014 STANDARD FEATURES

CHOKE TUBES: Fixed M.
FINISH: Black synthetic, Anti-reflective MILSPEC finish.
SIGHTS: Ghost-ring.
DRILLED & TAPPED
PICATINNY RAIL

M1014 OPTIONAL FEATURES

TRITIUM INSERTS: Three-dot tritium inserts available for ghost-ring sights.

M1014†

ITEM NUMBER	BARREL LENGTH	STOCK	FINISH	OVERALL LENGTH	AVERAGE WEIGHT	MSRP
FIXED-POSITION SKELETONIZED STOCK 12-GAUGE 2¾" AND 3"						
11701	18.5"	Skeletonized	Black synthetic	40"	8.0 lbs.	\$2299

COMMON SPECIFICATIONS: Magazine Capacity: 5+1 Chokes: Fixed M Type of Sights: Ghost-ring Length of Pull: 14¼" Drop at Heel: 2¼" Drop at Comb: 1½" †Receiver drilled and tapped for scope mount. Anti-reflective MILSPEC finish. Synthetic stock. Picatinny rail is included.



The Benelli M1014 features the United States flag engraved on the receiver in honor of this model's use by the U.S. Marine Corps.

Semi-Auto Defense Guns (continued)

M2 and M3 Tactical Models



M2 Tactical



 INERTIA DRIVEN SYSTEM

M2 TACTICAL, PISTOL GRIP – 12-GA, 3"
ITEM # 11052 Black synthetic, Ghost-ring sight



 INERTIA DRIVEN SYSTEM

M2 TACTICAL, COMFORTECH® – 12-GA, 3"
ITEM # 11029 Black synthetic, Ghost-ring sight

Benelli's M2 Tactical Shotgun has passed the test of time; establishing itself as the shotgun of choice for serious tactical needs. Outfitted with Benelli's Inertia Driven® technology, it utilizes recoil energy to cycle the action and eliminate fouling problems.

M2 STANDARD FEATURES

CHOKE TUBES: Crio® IC, M & F
FINISHES: Black synthetic
SIGHTS: M2 Tactical in ghost-ring
DRILLED & TAPPED: Standard on M2 ghost-ring

M2 OPTIONAL FEATURES

GEL RECOIL PADS: Three options to customize length of pull (ComforTech® only).
TRITIUM INSERTS: Three-dot tritium inserts available for ghost-ring sights.

M2 TACTICAL

ITEM NUMBER	BARREL LENGTH	STOCK (BLACK SYNTH.)	TYPE OF SIGHTS	OVERALL LENGTH	AVERAGE WEIGHT	MSRP
M2 TACTICAL† 12-GAUGE 2¾" AND 3"						
11052†	18.5"	Pistol Grip	Ghost-ring	39.75"	6.7 lbs.	\$1699
11029†	18.5"	ComforTech®	Ghost-ring	39.75"	6.7 lbs.	\$1699

COMMON SPECIFICATIONS: Magazine Capacity: 5+1 Crio® Chokes: IC, M, F Length of Pull: 14½"
Drop at Heel: 2" Drop at Comb: 1¼" Minimum recommended load: 3-dram, 1¼-oz. loads.
†Receiver drilled and tapped for 93A Weaver base.

SPECIFICATIONS AND PRICES SUBJECT TO CHANGE WITHOUT NOTICE.

M3 Tactical



 INERTIA DRIVEN SYSTEM

M3 CONVERTIBLE, PISTOL GRIP – 12-GA, 3"
ITEM # 11606 Black synthetic, Ghost-ring sight

The M3 offers the option of choosing either semi-auto or pump-action operation, depending on the intended purpose. It's easy to select fast-cycling semi-auto fire with conventional loads or you can choose pump-action for low-energy special purpose loads.

M3 STANDARD FEATURES

CHOKE TUBES: Fixed C.
FINISHES: Black synthetic.
SIGHTS: Ghost-ring

M3 CONVERTIBLE AUTO/PUMP

ITEM NUMBER	BARREL LENGTH	STOCK (BLACK SYNTH.)	TYPE OF SIGHTS	OVERALL LENGTH	AVERAGE WEIGHT	MSRP
M3 CONVERTIBLE 12-GAUGE 2¾" AND 3"						
11606	19.75"	Pistol Grip	Ghost-ring	41"	7.2 lbs.	\$1949

COMMON SPECIFICATIONS: Magazine Capacity: 5+1 Chokes: Fixed Cyl. Length of Pull: 14½"
Drop at Heel: 2" Drop at Comb: 1¼"

SPECIFICATIONS AND PRICES SUBJECT TO CHANGE WITHOUT NOTICE.

NOVA 3 TACTICAL **NEW!**
Next Generation Pump-Action



NOVA 3 PUMP TACTICAL - 12-GA, 3"
ITEM # 21506 922R MultiCam® Black,
Ghost-ring sight



Rear Ghost Ring Sight with Picatinny Rail

Allows for the attachment of various accessories.

Faster — 3" Chamber Leads to a 14% Shorter Cycling Stroke Compared to the Original Nova

M4 Bolt-Face For Ultra Reliability

M4 Barrel Ballistics
(Not available on #20580)

Front Post Sight

3 Magpul M-Lok Attachment Points
(Not available on item 20580)



Forend Magazine Cutoff Button

Activates a shell stop, allowing a chambered shell to be removed without releasing rounds from the magazine.

Beveled Loading Port

NOVA 3 PUMP DEFENSE - 12-GA, 3"
ITEM # 20580 Defense Black, Ghost-ring sight



NOVA 3 PUMP TACTICAL - 12-GA, 3"
ITEM # 21501 922r Black, Ghost-ring sight



NOVA 3 PUMP TACTICAL - 12-GA, 3"
ITEM # 21505 MultiCam® Black, Ghost-ring sight



Quick-Handling, Poly-Mod Build

Ergo-Evolved, Diamond Grip

This provides one of the best gripping surfaces on the market and adds to the distinctive look of Benelli's new Nova 3.

Durable Recoil Pad Provides Greater Recoil Reduction

Flush QD Sling Cup

NOVA³

Lighter | Faster | Always Ready

STANDARD FEATURES

- HIGH CAPACITY:** 922r models only
- FINISH:** Black synthetic, MultiCam® Black
- PICATINNY RAIL:** Mounted on 922r models
- INTEGRATED QD AND M-LOK MOUNTS** (20580 excluded)
- SIGHTS:** Ghost-ring
- DRILLED & TAPPED**

NOVA 3 PUMP DEFENSE & TACTICAL **NEW!**

ITEM NUMBER	BARREL LENGTH	STOCK	OVERALL LENGTH	AVERAGE WEIGHT	MSRP
NOVA 3 PUMP 12-GAUGE 2¾" AND 3"					
20580	18.5"	Defense Black	40.25"	5.9 lbs.	\$529
21500	18.5"	Black	40.25"	5.9 lbs.	\$629
21501	18.5"	922r Black	40.25"	6.1 lbs.	\$749
21505	18.5"	MultiCam® Black	40.25"	5.9 lbs.	\$749
21506	18.5"	922r MultiCam® Black	40.25"	6.1 lbs.	\$849

COMMON SPECIFICATIONS: Magazine Capacity: 4+1, 7+1 on 922r models Defense Choke: Fixed Cyl.; Tactical Choke: Fixed Mod.; 922r Choke: Mod. Mobil, threaded; Type of Sights: Ghost-ring; Length of Pull: 14½" Drop at Heel: 2¾" Drop at Comb: 1½"

NOVA 3 HUNTING **NEW!**
Next Generation Pump-Action

Faster —
3" Chamber Leads to
a 14% Shorter Cycling
Stroke Compared to
the Original Nova

NOVA 3
Lighter | Faster | Always Ready

NOVA 3 PUMP HUNTING - 12-GA, 3"
ITEM # 20511 Realtree® Max-7



Quick-Handling,
Poly-Mod Build

Crisp Trigger

Beveled Loading
Port

M4 Bolt-Face
Ultra Reliability

Forend Magazine
Cutoff Button

Activates a shell stop, allowing a
chambered shell to be removed without
releasing rounds from the magazine.

Ergo-Evolved,
Diamond Grip

One of the best gripping surfaces on the
market and adds to the distinctive look
of Benelli's new Nova 3.

Durable Recoil Pad
Provides Greater
Recoil Reduction

NOVA 3 PUMP HUNTING - 12-GA, 3"
ITEM # 20500 Black Synthetic



NOVA 3 PUMP HUNTING - 12-GA, 3"
ITEM # 20520 Mossy Oak® Bottomland™



NEW!

NOVA 3 PUMP HUNTING

ITEM NUMBER	BARREL LENGTH	STOCK	OVERALL LENGTH	AVERAGE WEIGHT	MSRP
NOVA 3 PUMP 12-GAUGE 2 3/4" AND 3"					
20500	26"	Black synthetic	47.5"	6.6 lbs.	\$529
20501	28"	Black synthetic	49.5"	6.7 lbs.	\$529
20510	26"	Realtree® Max-7	47.5"	6.6 lbs.	\$629
20511	28"	Realtree® Max-7	49.5"	6.7 lbs.	\$629
20520	26"	Mossy Oak® Bottomland™	47.5"	6.6 lbs.	\$629
20521	28"	Mossy Oak® Bottomland™	49.5"	6.7 lbs.	\$629

STANDARD FEATURES

CHOKE TUBES: IC, M, F, Mobil choke tubes and wrench
SIGHTS: Red-bar
FINISH: Black synthetic, Max-7, MOBL
DRILLED & TAPPED

COMMON SPECIFICATIONS: Magazine Capacity: 4+1 Chokes: IC, M, F, Mobil Type of Sights: Red-bar front sight Length of Pull: 14 1/2"
Drop at Heel: 2 3/8" Drop at Comb: 1 1/8"

SuperNova Dependable Pump-Action



SUPERNOVA – 12-GA, 3½"
ITEM # 20117 Realtree® Max-7™



Benelli's SuperNova embodies a modular design with a lightweight steel skeletal framework overmolded with a high-tech polymer, making the SuperNova super-light, super-strong and impervious to all weather conditions.



SUPERNOVA – 12-GA, 3½"
ITEM # 20100 Black synthetic



MODULAR STOCK SYSTEM

The SuperNova is available with a choice of two modular buttstocks, and can be quickly reconfigured with a 13 mm socket wrench. Both stocks are made of tough synthetic material with textured matte finish to offer years of reliable service.



SUPERNOVA

ITEM NUMBER	BARREL LENGTH	STOCK	OVERALL LENGTH	AVERAGE WEIGHT	MSRP
SUPERNOVA 12-GAUGE 2¾", 3" AND 3½"					
20100	28"	Black synthetic	49.5"	8.0 lbs.	\$679
20117	28"	Realtree® Max-7™	49.5"	8.0 lbs.	\$799

COMMON SPECIFICATIONS: Magazine Capacity: 4+1 Chokes: IC, M, F Type of Sights: Red-bar front sight Length of Pull: 14¼" Drop at Heel: 2¼" Drop at Comb: 1¼" †Receiver drilled and tapped for scope mounting.

SPECIFICATIONS AND PRICES SUBJECT TO CHANGE WITHOUT NOTICE.

The SuperNova's styled trigger guard delivers 30% more finger room to accommodate a gloved hand, along with a larger safety button for easy access and quick, positive function.



STANDARD FEATURES

CHOKE TUBES: IC, M, F choke tubes and wrench.
FINISHES: Realtree® Max-7™, Black synthetic.
SHIM KIT: For adjustment of drop and cast.

OPTIONAL FEATURES

CHOKE TUBES: Extended chokes for pass shooting (M), shooting waterfowl over decoys (IC) and for turkey hunting (XF) (12-gauge only).
GEL RECOIL PADS: Three options to customize length of pull to 13⅞", 14⅜" and 14⅞".
RAISED COMB PADS: Three options to customize comb height.



SUPERNOVA TACTICAL, COMFORTECH™ – 12-GA, 3½"
ITEM # 20145 Black synthetic, Open rifle sight



SUPERNOVA TACTICAL, PISTOL GRIP – 12-GA, 3½"
ITEM # 20160 Black synthetic, Ghost-ring sight

SUPERNOVA TACTICAL

ITEM NUMBER	BARREL LENGTH	STOCK (SYNTHETIC)	TYPE OF SIGHTS	OVERALL LENGTH	AVERAGE WEIGHT	MSRP
SUPERNOVA TACTICAL† 12-GAUGE 2¾", 3" AND 3½"						
20145	18"	ComforTech™	Open Rifle	40"	7.6 lbs.	\$579
20155	18"	ComforTech™	Ghost-ring	40"	7.6 lbs.	\$679
20160	18"	Pistol Grip	Ghost-ring	40"	7.6 lbs.	\$679

COMMON SPECIFICATIONS: Magazine Capacity: 4+1 Chokes: Fixed Cyl. Length of Pull: 14¼" Drop at Heel: 2¼" Drop at Comb: 1¼" †Receiver drilled and tapped for scope base.

SUPERNOVA TACTICAL STANDARD FEATURES


CHOKE TUBES: Fixed cylinder.
FINISHES: All models available in Black synthetic. **SHIM KIT:** For adjustment of drop and cast (avail. for SuperNova ComforTech™ model only). **SIGHTS:** Ghost-ring or open rifle.

OPTIONAL FEATURES

GEL RECOIL PADS: Three options to customize length of pull (ComforTech™ only).
BARRELS: Variety of field barrels.
TRITIUM INSERTS: Three-dot tritium inserts available for ghost-ring sights.

Nova Pump Tried & True Performance




NOVA PUMP – 20-GA, 3" ITEM # 20042 Mossy Oak® Bottomland™



Built to withstand the harshest conditions, corrosion-proof polymer is overmolded on a skeleton framework to form the one-piece receiver and buttstock for optimal strength.



The button on the underside of the forend activates a shell stop, allowing a chambered shell to be removed without releasing rounds from the magazine.



Ergonomic grooves on the Nova pistol grip provide a positive gripping surface and distinctive look on Benelli's original pump gun.



NOVA PUMP COMPACT – 20-GA, 3" ITEM # 20036 Black synthetic

STANDARD FEATURES

CHOKE TUBES: IC, M, F choke tubes and wrench.
FINISHES: Mossy Oak® Bottomland™, Black synthetic

OPTIONAL FEATURES

CHOKE TUBES: Extended chokes for pass shooting (IM), shooting water-fowl over decoys (IC) and for turkey hunting (XF) (12-gauge only).

NOVA PUMP

ITEM NUMBER	BARREL LENGTH	STOCK	OVERALL LENGTH	AVERAGE WEIGHT	MSRP
NOVA PUMP 20-GAUGE 2¾" AND 3"					
20030	26"	Black synthetic	47.5"	6.6 lbs.	\$529
20043	24"	Mossy Oak® Bottomland™	45.5"	6.5 lbs.	\$649
20042	26"	Mossy Oak® Bottomland™	47.5"	6.6 lbs.	\$649
NOVA PUMP COMPACT 20-GAUGE 2¾" AND 3"					
20036	24"	Black synthetic	44.2"	6.4 lbs.	\$529

COMMON SPECIFICATIONS: Magazine Capacity: 4+1 Chokes: IC,M,F Type of Sights: Red-bar front sight Length of Pull: 14¼" (compact 13") Drop at Heel: 2¼" (compact 2") Drop at Comb: 1¼"



M2 Speed **NEW!** When You Have the Need For Speed



M2 SPEED – 12-GA, 3"
ITEM # 11270 Black synthetic, M2 Speed sight



NEW!

M2 3-GUN

ITEM NUMBER	BARREL LENGTH	STOCK	TYPE OF SIGHTS	OVERALL LENGTH	AVERAGE WEIGHT	MSRP
M2 SPEED 12-GAUGE 3"						
11270	24"	Black	M2 Speed	45.5"	6.8 lbs.	\$2149

COMMON SPECIFICATIONS: Magazine Capacity: 5+1 Crio® Chokes: C, IC, M, IM, F
Length of Pull: 14 1/4" Drop at Heel: 2 1/4" Drop at Comb: 1 1/4"
Minimum recommended load: 3-dram, 1 1/4-oz. loads.

STANDARD FEATURES

- CHOKE TUBES:** Crio® C, IC, M, IM, F
- FINISHES:** Matte Blue Crio Barrel.
- SIGHTS:** M2 Speed Sight
- BOLT:** Gloss BE.S.T. Treated
- RECOIL PADS:** Comfort Tech® 3 recoil pads and Combtech pads.
- SHIM KIT:** For adjustment of drop and cast.
- HARD CASE:** Custom fitted hard case to protect during transport.

OPTIONAL FEATURES

- CHOKE TUBES:** Extended Crio® chokes C, IM, F and XF for turkey.
- COMFORTECH 3 RECOIL PADS:** Three options to customize length of pull to 13 7/8", 14 3/8" or 14 3/4"
- COMB-TECH® RAISED COMB PADS:** Two options to customize sight plane for different shooting scenarios.

Time is everything in 3-gun competition, so we took our already fast-shooting M2 shotgun and optimized it with features that will shave seconds off your score. An enlarged bolt handle and bolt release button promote fast operation. BE.S.T. bolt coating defeats corrosion while enhancing cycling speed. A flip-up rifle sight lets you choose the sight picture that gets you on target faster, and an extended fiber-optic front sight stands out better in low light. An aggressively beveled receiver facilitates super-fast reloads. All this, plus all the performance and comfort features that are standard in our M2 platforms, delivers a fun, fast, and formidable 3-gun firearm.



A flip-up rifle sight at the back end of the rib atop the barrel lets you choose the sight picture that gets you on target fastest.



An aggressively beveled receiver is cut out to maximize reloading speed and efficiency. You won't believe how quickly you can load this firearm.



The enlarged bolt handle and bolt-release button enhance the speed of this shotgun's operation, and BE.S.T. coating on the bolt makes it cycle faster.



An elongated front fiber-optic sight captures more light for improved target acquisition in low or poor light situations.



UNMATCHED INNOVATION UNRIVALED PERFORMANCE

LUPU

Blending technology and craftsmanship, Benelli has created a chassis-style bolt-action rifle like no other in its class. The Benelli Lupo is loaded with innovative features – including seven exclusive Benelli patents – that offer incredible sub-MOA accuracy, custom-fit adjustability out of the box, outstanding ergonomics and built-in recoil reduction. The result is a perfect fit between the rifle and shooter for the ultimate in comfort and performance. **Keep reading to learn more.**

“ *The B.E.S.T. Lupo is Benelli's bid to reinvent the hunting rifle, and there's no doubt the Italian brand is taking that task seriously. An accurate rifle that's overflowing with forward-thinking rifle technology, the Lupo is going to continue to win fans as more hunters learn to love all that these guns offer.* ”

Brad Fitzpatrick – American Hunter

 **LUPO**



Benelli Innovation



A design that improves accuracy over traditional bedded stocks. Hardened, steel barrel components are directly bedded to the alloy receiver. This metal-to-metal contact is not affected by the elements and delivers precise sub-MOA accuracy.



Hammer-forged stresses are relieved and the surface of the bore becomes more evenly-grained when a rifle barrel is cryogenically treated. The result, a more uniform surface that improves accuracy and stays clean longer.



Achieve a customized fit out of the box without the need for expensive gun-smithing. Each Lupo rifle includes a shim kit for drop, cast and trigger reach adjustment.



Tame recoil with the patented Progressive Comfort system built into the stock. This system significantly reduces felt-recoil on even the largest calibers and allows the shooter to maintain focus on the target.



Adjustable trigger reach

Adjustable trigger pull: 2.2 - 4.4 lbs.



Fully-Adjustable Trigger & Ergonomic, Efficient 60° Bolt Throw



Benelli BE.S.T. is a proprietary coating that protects steel with a tough, impenetrable armor that stops rust and corrosion. Applied using nanotechnology and diamond-like carbon particles, BE.S.T. outperforms every other available coating and surface treatment in the firearms market. Available on select models.

LUPO Bolt-Action Rifle
Field Agile, X-Ring Accurate



LUPO BOLT-ACTION RIFLE, PROGRESSIVE COMFORT*
ITEM # 11909 AA-Grade satin walnut, BE.S.T.
gloss finish on barrel

LUPO



LUPO BOLT-ACTION RIFLE, PROGRESSIVE COMFORT*
ITEM # 11910 AA-Grade satin walnut, BE.S.T.
gloss finish on barrel

LUPO STANDARD FEATURES

- SCULPTED BOLT:** Three large locking lugs, 60-degree bolt throw.
- FINISH:** AA-Grade satin walnut, BE.S.T. gloss finish on barrel.
- FREE-FLOATING CRIO BARREL**
- ADJUSTABLE TRIGGER:** 2.2 - 4.4 lbs.
- THREADED CRIO BARREL:** Accepts muzzle accessories, 5/8" x 24 threads.
- PROGRESSIVE COMFORT:** Integrated recoil management.
- STOCK SPACERS:** Adjust length of pull from 13.8" - 14.75"
- TRIGGER REACH SPACERS:** Adjust trigger reach for custom fit.
- DETACHABLE DOUBLE-STACK BOX-TYPE MAGAZINE**
- INTEGRATED SWIVEL MOUNTS**
- 2-PIECE PICATINNY RAIL:** Quick and easy optics mounting.

OPTIONAL FEATURES

- PROGRESSIVE COMFORT - LARGE PAD:** Allows length of pull to be adjusted from 14.2" to 15.2".

The wood-appointed Lupo has industry-leading gloss BE.S.T. treatment to prevent rust, corrosion and abrasions – so effective it's backed by a 25-year warranty! It includes a handsome AA-grade, checkered walnut stock and your choice of several popular big-game calibers.

LUPO BOLT-ACTION RIFLE

ITEM NUMBER	CALIBER	BARREL LENGTH	STOCK	OVERALL LENGTH	AVERAGE WEIGHT	MSRP
AA-GRADE SATIN WALNUT, GLOSS BE.S.T. FINISH						
11909	.300 Win. Mag.	24"	AA Satin Walnut	44.125"	7.5 lbs.	\$2299
11910	6.5 Creedmoor	24"	AA Satin Walnut	44.125"	7.5 lbs.	\$2299
11911	.308 Winchester	22"	AA Satin Walnut	42.125"	7.2 lbs.	\$2299
11912	.30-06 Spr.	22"	AA Satin Walnut	42.125"	7.3 lbs.	\$2299

COMMON SPECIFICATIONS: Capacity: 5+1 (.300 Win.Mag. 4+1) Twist: .30-06 1:11, .300 Win. Mag. and .308 Win. 1:10, RH; 6.5 Creedmoor 1:8, RH; Crio BBL: Free-floating, Threaded Length of Pull: Adjustable, 13.8" - 14.75" (14.2" - 15.2" with optional large Progressive Comfort pad). SPECIFICATIONS SUBJECT TO CHANGE WITHOUT NOTICE.



LUPO Bolt-Action Rifle **NEW!**
 Built to Last, Optimized to Hunt



LUPO BOLT-ACTION RIFLE, PROGRESSIVE COMFORT
 ITEM # 15401 Charred Timber, Labrador Gray BE.S.T.



Enjoy all the standard features of our Lupo rifle in a version we created for hunters wanting a bit more concealment and superior protection from the elements. Outfitted with colored corrosion-defying BE.S.T. and attractive webbing on the stock and forend, this sleek predator is as equally suited to dense Eastern forests as it is to more drab Western environments. We also added a raised comb for shooting comfort, a one-piece picatinny rail to increase options for mounting optics, and a muzzle brake to mitigate recoil and enhance accuracy. A Crio-treated, free-floating barrel contributes sub-MOA accuracy. From your first trip to the range, you'll be ready to become the Apex predator in any hunting environment.

LUPO STANDARD FEATURES

- SCULPTED BOLT:** Three large locking lugs, 60-degree bolt throw.
- FINISH:** Charred Timber synthetic stock, Labrador Grey BE.S.T.
- FREE-FLOATING CRIO BARREL**
- ADJUSTABLE TRIGGER:** 2.2 - 4.4 lbs.
- THREADED CRIO BARREL:** Accepts muzzle accessories, 5/8" x 24 threads.
- PROGRESSIVE COMFORT:** Integrated recoil management.
- STOCK SPACERS:** Adjust length of pull from 13.8" - 14.75"
- TRIGGER REACH SPACERS:** Adjust trigger reach for custom fit.
- DETACHABLE DOUBLE-STACK BOX-TYPE MAGAZINE**
- INTEGRATED SWIVEL MOUNTS**
- 1-PIECE PICATINNY RAIL**
- MUZZLE BRAKE**

LUPO BOLT-ACTION RIFLE

ITEM NUMBER	CALIBER	BARREL LENGTH	STOCK	OVERALL LENGTH	AVERAGE WEIGHT	MSRP
CHARRED TIMBER, LABRADOR GRAY BE.S.T.						
15304	.308 Winchester	22"	Charred Timber	42.125"	7.2 lbs.	\$2299
15305	.30-06 Spr.	22"	Charred Timber	42.125"	7.3 lbs.	\$2299
15307	.300 Winchester	24"	Charred Timber	44.125"	7.5 lbs.	\$2299
15401	6.5 Creedmoor	24"	Charred Timber	44.125"	7.5 lbs.	\$2299
15404	7mm PRC	24"	Charred Timber	44.125"	7.5 lbs.	\$2299

COMMON SPECIFICATIONS: Capacity: 5+1 (.300 Win.Mag. and 7mm PRC 4+1) Twist: .30-06 1:11, .300 Win. Mag. and .308 Win. 1:10, RH; 6.5 Creedmoor 7mm PRC 1:8, RH; Crio BBL: Free-floating, Threaded Length of Pull: Adjustable, 13.8" - 14.75" (14.2" - 15.2" with optional large Progressive Comfort pad). SPECIFICATIONS SUBJECT TO CHANGE WITHOUT NOTICE.

OPTIONAL FEATURES

PROGRESSIVE COMFORT - LARGE PAD: Allows length of pull to be adjusted from 14.2" to 15.2".



LUPO Bolt-Action Rifle

Unmatched Innovation, Unrivaled Performance



LUPO BOLT-ACTION RIFLE, PROGRESSIVE COMFORT®
OPTIFADE™ Elevated II, Matte Labrador Gray BE.S.T.



LUPO BOLT-ACTION RIFLE, PROGRESSIVE COMFORT®
OPTIFADE™ Open Country, Matte BE.S.T.

Benelli's Lupo bolt-action rifle has been field-tested on hunts across the globe and found to be a truly exceptional firearm. Not only has it delivered sub-MOA accuracy and decisive on-game performance, but hunters also rave about ergonomic and customization features that make it fit like it was made just for them. From the threaded muzzle to the recoil-mitigating Combtech® cheek pad, the Lupo is packed with Benelli features and technology shooters praise and declare unrivaled among hunting rifles. The Lupo is now available with Benelli's exclusive industry-leading BE.S.T. surface treatment and is available in three popular big-game calibers.



In addition to Benelli's industry-leading 10-year warranty, BE.S.T.-treated barrels and parts carry a warranty against rust and corrosion for 25 years from the date of purchase.

LUPO

- **Accuracy:** The Lupo features a precision Crio-treated free-floating barrel attached to a hardened-steel barrel extension that is bedded to a steel block in the alloy receiver. The result is precision sub-MOA accuracy... shot-after-shot.
- **Advanced Ergonomics and Adjustability:** The shape of the Benelli Lupo has been optimized for control. The chassis-style configuration of a separate stock, receiver and forend allow the shooter to customize the Lupo to one of 36 drop and cast stock positions with the included shims. Further fit adjustments can be made by using the included length-of-pull spacers. Optional fit choices include extra-high and standard cheek pad styles and one optional-length butt pad.
- **Comfort:** The Benelli Lupo tames recoil with a patented built-in Progressive Comfort system and a Combtech cheek pad. The trigger is crisp and with an adjustable trigger-pull weight. Finger reach to the trigger is also adjustable with included spacers which can be placed between the receiver and the stock. The double-stack box magazine is incredibly easy to load inserted or out of the gun. The ambidextrous top safety is easy to access. AirTouch Grip surfaces allow for a safe and firm hold on the rifle.



LUPO BOLT-ACTION RIFLE

ITEM NUMBER	CALIBER	BARREL LENGTH	STOCK	OVERALL LENGTH	AVERAGE WEIGHT	MSRP
OPTIFADE OPEN COUNTRY, MATTE BE.S.T.						
11995	6.5 Creedmoor	24"	Open Country	44.125"	7.5 lbs.	\$1949
OPTIFADE ELEVATED II, MATTE LABRADOR GRAY BE.S.T.						
11992	6.5 Creedmoor	24"	Elevated II	44.125"	7.5 lbs.	\$1949
11994	.300 Win. Mag.	24"	Elevated II	44.125"	7.5 lbs.	\$1949

COMMON SPECIFICATIONS: Capacity: 5+1 (.300 Win. Mag. 4+1) Twist: .300 Win. Mag. and .308 Win. 1:10, RH; 6.5 Creedmoor 1:8, RH. Crio BBL: Free-floating, Threaded Length of Pull: Adjustable, 13.8" - 14.75" (14.2" - 15.2" with optional large Progressive Comfort pad). SPECIFICATIONS SUBJECT TO CHANGE WITHOUT NOTICE.

LUPO STANDARD FEATURES

- SCULPTED BOLT: Three large locking lugs, 60-degree bolt throw.
- FINISHES: Open Country/Matte BE.S.T., Elevated II/Matte Labrador gray BE.S.T.
- FREE-FLOATING CRIO BARREL
- ADJUSTABLE TRIGGER: 2.2 - 4.4 lbs.
- THREADED CRIO BARREL: Accepts muzzle accessories, 5/8" x 24 threads.
- COMBTECH RAISED CHEEK PAD: Mitigates felt facial recoil.
- PROGRESSIVE COMFORT: Integrated recoil management.
- STOCK SPACERS: Adjust length of pull from 13.8" - 14.75"
- TRIGGER REACH SPACERS: Adjust trigger reach for custom fit.
- DETACHABLE DOUBLE-STACK BOX-TYPE MAGAZINE
- INTEGRATED SWIVEL MOUNTS
- 2-PIECE PICATINNY RAIL: Quick and easy optics mounting.

OPTIONAL FEATURES

- PROGRESSIVE COMFORT - LARGE PAD: Allows length of pull to be adjusted from 14.2" to 15.2".
- COMBTECH LOW AND EXTRA-HIGH CHEEK PAD: Adjust cheek-weld height for a custom fit.

LUPO Bolt-Action Rifle **NEW!**
An Exceptional Hunting Firearm



LUPO BOLT-ACTION RIFLE, PROGRESSIVE COMFORT
ITEM # 15014 Loden Fleck with Patriot Brown Cerakote



LUPO

All the comfort and performance features that are standard in our Benelli Lupo rifles, to which we added Cerakote coating to defend against the elements. There's a sharp-looking webbing design on the stock and forend, a

raised comb, a one-piece picatinny rail, and a muzzle brake to enhance accuracy and reduce recoil. The Crio-treated, free-floating barrel delivers sub- MOA accuracy, making this Lupo the firearm you need to dominate the field.

NEW!

LUPO BOLT-ACTION RIFLE

ITEM NUMBER	CALIBER	BARREL LENGTH	STOCK	OVERALL LENGTH	AVERAGE WEIGHT	MSRP
LODEN FLECK, PATRIOT BROWN CERAKOTE						
15014	.308 Winchester	22"	Loden Fleck	42.125"	7.2 lbs.	\$2049
15015	.30-06 Spr.	22"	Loden Fleck	42.125"	7.3 lbs.	\$2049
15017	.300 Win. Mag.	24"	Loden Fleck	44.125"	7.5 lbs.	\$2049
15111	6.5mm Creedmoor	24"	Loden Fleck	44.125"	7.5 lbs.	\$2049
15112	6.5 PRC	24"	Loden Fleck	44.125"	7.5 lbs.	\$2049
15114	7mm PRC	24"	Loden Fleck	44.125"	7.5 lbs.	\$2049

COMMON SPECIFICATIONS: Capacity: 5+1 (.300 Win. Mag. and 7mm PRC, 4+1) Twist: .30-06 1:11, .300 Win. Mag. and .308 Win. 1:10; 6.5 Creedmoor 1:8; 6.5 PRC 1:7.5; 7mm PRC 1:8; Crio BBL: Free-floating, Threaded Length of Pull: Adjustable, 13.8" - 14.75" (14.2" - 15.2" with optional large Progressive Comfort pad). SPECIFICATIONS SUBJECT TO CHANGE WITHOUT NOTICE.

LUPO STANDARD FEATURES

- SCULPTED BOLT: Three large locking lugs, 60-degree bolt throw.
- FINISH: Loden Fleck synthetic stock, Patriot Brown Cerakote receiver and barrel.
- FREE-FLOATING CRIO BARREL
- ADJUSTABLE TRIGGER: 2.2 - 4.4 lbs.
- THREADED CRIO BARREL: Accepts muzzle accessories, 5/8" x 24 threads.
- COMBTECH RAISED CHEEK PAD: Mitigates felt facial recoil.
- PROGRESSIVE COMFORT: Integrated recoil management.
- STOCK SPACERS: Adjust length of pull from 13.8" - 14.75"
- TRIGGER REACH SPACERS: Adjust trigger reach for custom fit.
- DETACHABLE DOUBLE-STACK BOX-TYPE MAGAZINE
- INTEGRATED SWIVEL MOUNTS
- 1-PIECE PICATINNY RAIL: Quick, easy optics mounting.
- MUZZLE BRAKE

OPTIONAL FEATURES

- PROGRESSIVE COMFORT - LARGE PAD: Allows length of pull to be adjusted from 14.2" to 15.2".
- COMBTECH LOW AND EXTRA-HIGH CHEEK PAD: Adjust cheek-weld height for a custom fit.



LUPO BOLT-ACTION RIFLE, WEBBING/CERAKOTE - .308 WIN.
ITEM # 15014 Loden Fleck with Patriot Brown Cerakote

LUPO Bolt-Action Rifle
Unmatched Innovation, Unrivaled Performance



LUPO BOLT-ACTION RIFLE, PROGRESSIVE COMFORT®
ITEM # 15004 Granite Moss, Matte Blue



LUPO

The Lupo is Benelli's first bolt-action rifle. Sub-MOA accuracy, advanced ergonomics, and shooting comfort have been carefully engineered into this chassis-style hunting rifle that allows for exclusive fit and customization out of the box.

The Lupo is packed with innovative features, including seven exclusive Benelli patents. The result is a superb hunting rifle offering a customized fit, exceptional handling, and proudly carries a three-shot, sub-MOA guarantee.

LUPO BOLT-ACTION RIFLE

ITEM NUMBER	CALIBER	BARREL LENGTH	STOCK	OVERALL LENGTH	AVERAGE WEIGHT	MSRP
GRANITE MOSS, MATTE BLUED						
NEW! 15000	.223 Remington	22"	Granite Moss	42.125"	7.4 lbs.	\$1699
15002	.243 Winchester	22"	Granite Moss	42.125"	7.2 lbs.	\$1699
15003	.270 Winchester	22"	Granite Moss	42.125"	7.3 lbs.	\$1699
15004	.308 Winchester	22"	Granite Moss	42.125"	7.2 lbs.	\$1699
15005	.30-06 Spr.	22"	Granite Moss	42.125"	7.3 lbs.	\$1699
15007	.300 Win. Mag.	24"	Granite Moss	44.125"	7.5 lbs.	\$1699
15100	6mm Creedmoor	24"	Granite Moss	44.125"	7.5 lbs.	\$1699
15101	6.5mm Creedmoor	24"	Granite Moss	44.125"	7.5 lbs.	\$1699
15102	6.5mm PRC	24"	Granite Moss	44.125"	7.5 lbs.	\$1699
NEW! 15104	7mm PRC	24"	Granite Moss	44.125"	7.5 lbs.	\$1699
15106	7mm Rem. Mag.	24"	Granite Moss	44.125"	7.5 lbs.	\$1699

LUPO STANDARD FEATURES

- SCULPTED BOLT:** Three large locking lugs, 60-degree bolt throw.
- FINISH:** Granite Moss synthetic stock, matte blued receiver and barrel.
- FREE-FLOATING CRIO BARREL**
- ADJUSTABLE TRIGGER:** 2.2 - 4.4 lbs.
- THREADED CRIO BARREL:** Accepts muzzle accessories, 5/8" x 24 threads.
- COMBTECH RAISED CHEEK PAD:** Mitigates felt facial recoil.
- PROGRESSIVE COMFORT:** Integrated recoil management.
- STOCK SPACERS:** Adjust length of pull from 13.8" - 14.75"
- TRIGGER REACH SPACERS:** Adjust trigger reach for custom fit.
- DETACHABLE DOUBLE-STACK BOX-TYPE MAGAZINE**
- INTEGRATED SWIVEL MOUNTS**
- 2-PIECE PICATINNY RAIL:** Quick, easy optics mounting.

OPTIONAL FEATURES

- PROGRESSIVE COMFORT - LARGE PAD:** Allows length of pull to be adjusted from 14.2" to 15.2".
- COMBTECH LOW AND EXTRA-HIGH CHEEK PAD:** Adjust cheek-weld height for a custom fit.

COMMON SPECIFICATIONS: Capacity: 5+1 (.300 Win. Mag. 4+1) Twist: .30-06 1:11, .300 Win. Mag. and .308 Win. 1:10; 7mm PRC 1:8, RH; .270 Win. 1:10, RH; 6.5 Creedmoor 1:8, RH; .243 Win. 1:10, RH; 6.5 PRC 1:7.5, RH; 7mm Rem. Mag. 1:9.5, RH; Crio BBL: Free-floating, Threaded
Length of Pull: Adjustable, 13.8" - 14.75" (14.2" - 15.2" with optional large Progressive Comfort pad). SPECIFICATIONS SUBJECT TO CHANGE WITHOUT NOTICE.



LUPO BOLT-ACTION RIFLE, PROGRESSIVE COMFORT®
ITEM # 15101 Granite Moss, Matte Blue.

LUPO HPR Bolt-Action Rifle
Benelli's High Precision Rifle

LUPO HPR
BE.S.T.



One of the cornerstones of a precision rifle platform is proper fitment to the shooter's unique size and biomechanics. The LUPO HPR's all-new hybrid stock system provides the custom adjustability essential to bring out and enhance the shooter's marksmanship skills so they can make the long shots. Features include an 8-position comb height adjustment, interchangeable grip, stock spacers for LOP adjustment, and cast and drop shims to achieve optimal eye alignment behind the scope.

LUPO HPR Bolt-Action Rifle
Dominate the Distance



Steiner optic not included.



LUPO HPR
BE.S.T.



LUPO HPR BOLT-ACTION RIFLE, PROGRESSIVE COMFORT*
ITEM # 15701 Tan/Black Webbing, Matte BE.S.T.



In addition to Benelli's industry-leading 10-year warranty, BE.S.T.-treated barrels and parts carry a warranty against rust and corrosion for 25 years from the date of purchase.

Benelli's all-new LUPO HPR establishes an enviable benchmark for a factory-guaranteed sub-MOA (3/4-inch, 5-shot) long-range shooting and hunting bolt-action rifle. Chambered for the most popular long-range cartridges (6.5 PRC, 6.5 CRD, .338 LM, .300 PRC, .300 WM, and .308 WIN), the new Lupo HPR matches a revolutionary custom-fit stock system with a heavy-contour, straight-fluted CRIO barrel to deliver a long-range rifle that incorporates the function of a chassis rifle with the handling grace and accuracy of a custom bolt-action. This hybrid platform answers the call of open country big-game and varmint hunters for a rifle that delivers the far-reaching accuracy of a competitive long-range custom rifle with the agility of a true hunting bolt-action.

LUPO HPR BOLT-ACTION RIFLE

ITEM NUMBER	CALIBER	BARREL LENGTH	STOCK	OVERALL LENGTH	AVERAGE WEIGHT	MSRP
SYNTHETIC, MATTE BE.S.T.						
15604	.308 Win.	24"	Tan/Black Webbing	46.25"	9.4 lbs.	\$2949
15607	.300 Win. Mag.	26"	Tan/Black Webbing	48.25"	10.4 lbs.	\$2949
15608	.300 PRC	26"	Tan/Black Webbing	48.25"	9.8 lbs.	\$2949
15609	.338 Lapua Mag.	26"	Tan/Black Webbing	48.25"	9.7 lbs.	\$2949
15701	6.5 Creedmoor	24"	Tan/Black Webbing	46.25"	9.5 lbs.	\$2949
15702	6.5 PRC	24"	Tan/Black Webbing	46.25"	9.6 lbs.	\$2949

COMMON SPECIFICATIONS: Capacity: 5+1 (.300 Win. Mag., .338 Lapua Mag., .300 PRC 4+1) Twist: .300 Win. Mag. and .308 Win. 1:10, RH; 6.5 Creedmoor 1:8, RH; .300 PRC. 1:8.5, RH; 6.5 PRC 1:7.5, RH; .338 Lapua Mag. 1:9.4, RH; Crio BBL: Free-floating, Threaded w/Muzzle Brake Length of Pull: Adjustable, 13.75" - 14.75". SPECIFICATIONS SUBJECT TO CHANGE WITHOUT NOTICE.

LUPO HPR STANDARD FEATURES

- SCULPTED BOLT:** Three large locking lugs, 60-degree bolt throw.
- FINISH:** Tan synthetic stock/black webbing, matte black BE.S.T. receiver, barrel and bolt.
- FREE-FLOATING CRIO BARREL**
- ADJUSTABLE TRIGGER:** 2.2 - 4.4 lbs.
- THREADED CRIO BARREL WITH BRAKE:** Accepts muzzle accessories, 5/8" x 24 threads.
- PUSH-BUTTON ADJUSTABLE COMB:** 8 height settings.
- PROGRESSIVE COMFORT:** Integrated recoil management.
- STOCK SPACERS:** Adjust length of pull from 13.75" - 14.75".
- DETACHABLE BOX-TYPE DOUBLE-STACK MAGAZINE**
- INTEGRATED QD AND M-LOK MOUNTS**
- ONE-PIECE 30 MOA PICATINNY RAIL:** Quick and easy optics mounting.
- MUZZLE BRAKE**

OPTIONAL FEATURES

- PROGRESSIVE COMFORT - LARGE PAD:** Allows length of pull to be adjusted from 14.2" to 15.2".



R1 Endurance Semi-Auto Rifle
Take the Bite Out of Recoil



BE.S.T.
BENELLI SURFACE TREATMENT

Benelli R1 Endurance rifles include a BE.S.T. treated piston rod for superior reliability.



Most sporting firearms today differ little in terms of technology from those developed a century ago. That's why the design team at Benelli set out to create something completely unique, and succeeded with the R1 Endurance semi-automatic hunting rifle – a trim, fast-handling firearm with style to spare.

The R1 Endurance's action is based on Benelli's innovative M4 military shotgun used by the United States Marine Corps. It incorporates the auto-regulating, gas-operated (A.R.G.O.) system adapted for use with

centerfire rifle cartridges paired with a three-lug rotary bolt. The gas cylinder is positioned to allow for a short operating rod, resulting in less felt recoil than other rifles.

The free-floating, cryogenically treated barrel is mated to a sturdy steel upper receiver to offer outstanding accuracy and a secure platform for mounting optics. The lower receiver is anodized aluminum to reduce weight.

R1 ENDURANCE STANDARD FEATURES

FINISHES: Black synthetic, and A-Grade satin walnut.

BARRELS: CRIO®-treated barrels. **SHIM KIT:** For adjustment of drop and cast.

DRILLED & TAPPED: All R1 Endurance receivers are drilled and tapped for scope mounting and come equipped with a Picatinny rail.

OPTIONAL FEATURES

RECOIL PADS: Three options to customize length of pull to 13³/₈" , 14" or 14³/₈".

RAISED COMB PADS: Extra-high comb pads for scoped rifle (ComforTech® 3 only).

SIGHTS: Open adjustable rear blade and front fiber-optic.

R1 ENDURANCE RIFLE

ITEM NUMBER	BARREL LENGTH	STOCK	MAGAZINE CAPACITY	OVERALL LENGTH	AVERAGE WEIGHT	MSRP
R1 ENDURANCE RIFLE .30-06 SPRINGFIELD						
11782	22"	A-Grade walnut	5+1	44"	7.3 lbs.	\$1949
11762	22"	Black synthetic	5+1	44"	7.3 lbs.	\$1949
R1 ENDURANCE RIFLE .308 WINCHESTER						
11781	22"	A-Grade walnut	5+1	44"	7.3 lbs.	\$1949
11761	22"	Black synthetic	5+1	44"	7.3 lbs.	\$1949

COMMON SPECIFICATIONS: **Type of Sights:** Receiver is drilled and tapped for scope mount. Picatinny rail included with all models. Open sights available for purchase. **Twist:** 1:11, RH. **Length of Pull:** 13³/₈" **Drop at Heel:** 1¹/₄" **Drop at Comb:** 1¹/₄" **Comb:** Raised comb included.

SPECIFICATIONS AND PRICES SUBJECT TO CHANGE WITHOUT NOTICE.



R1 ENDURANCE RIFLE, COMFORTECH® 3 – .308 WIN.
ITEM # 11761 Black synthetic



R1 ENDURANCE RIFLE – .308 WIN.
ITEM # 11781 A-Grade satin walnut



Combtech® Comb Pad Inserts

Benelli engineers created a new cheek-comb pad called Combtech, which greatly reduces facial impact and vibrations. The insert not only cushions the shooter's cheek during recoil, but it is also very smooth so the cheek can slide along its surface at the shot for added comfort. Available in standard/low comb, or raised comb for target shooting and scoped guns. Fits SBE3, ETHOS Cordoba BE.S.T., ETHOS SuperSport and LUPO rifles with synthetic stocks.



Raised Comb
ITEM # 80260

Standard/Low Comb
ITEM # 80259

ComforTech® 3 Recoil Pads

Easily change the pull length of your SBE3, ETHOS Cordoba BE.S.T. and ETHOS SuperSport. Insert an optional recoil pad to alter the length of pull between 13⁷/₈" to 14⁷/₈". All pads have excellent recoil-reducing properties.



Optional Short
Recoil Pad
13⁷/₈" L.O.P.
ITEM #
80256

Standard Pad
14³/₈" L.O.P.
ITEM #
80257

Optional
Long Pad
14⁷/₈" L.O.P.
ITEM #
80258

R1 Rifle Sight Package



Optional open sights feature a fully adjustable rear blade and front sight with a special red fiber-optic insert.

ITEM # 81131



Shim Kits

You can customize models outfitted with the ComforTech® buttstock to your personal requirements using a shim kit that adjusts both drop and cast.

STOCK ADJUSTMENT KIT

12-GA. SBEII/M2/SuperSport/
Cordoba/Montefeltro/Legacy
ITEM # 60850

12-GA. VINCI/SUPER VINCI
ITEM #60811

12-GA. ETHOS
ITEM #60337

20-GA. Montefeltro/M2/
Legacy/SuperSport/Cordoba
ITEM # 83140

12-GA. Left-Hand Montefeltro
ITEM #60161

R1
ITEM #81173

Synthetic Pistol Grip



SUPERNOVA
Black synthetic – 12-ga.
(Non-adjustable drop)

STOCK ITEM # 60015

Chokes



STANDARD CHOKES 12-GAUGE, FLUSH

Fits: SuperNova, Nova, M4

ITEM # 80056P	F	ITEM # 80058P	IC
ITEM # 80061P	IM	ITEM # 80065P	C
ITEM # 80063P	M		

CRIO® CHOKES 12-GAUGE, FLUSH

Fits: SBell, M2, Montefeltro, Legacy, Vinci, SuperSport, Super Vinci, ETHOS, 828U

ITEM # 83000P	F	ITEM # 83003P	IC
ITEM # 83001P	IM	ITEM # 83004P	C
ITEM # 83002P	M		

CRIO® CHOKES 12-GAUGE EXTENDED, MATTE BLACK

Fits: SBell, M2, Montefeltro, Legacy, Vinci, SuperSport, Super Vinci, ETHOS, 828U

ITEM # 83015P	PASS	ITEM # 83017P	EXTRA-FULL TURKEY
ITEM # 83016P	DECOY		

CRIO® CHOKES 12-GAUGE EXTENDED, NICKEL-PLATED

Fits: SBell, M2, Montefeltro, Legacy, Vinci, SuperSport, Super Vinci, ETHOS, 828U

ITEM # 83028	F	ITEM # 83031	IC
ITEM # 83029	IM	ITEM # 83032	C
ITEM # 83030	M		

CRIO® CHOKES 20-GAUGE EXTENDED, NICKEL-PLATED

Fits: SuperSport, Cordoba, Legacy, Montefeltro, Ultra Light, M2

ITEM # 83168	F	ITEM # 83171	IC
ITEM # 83169	IM	ITEM # 83172	C
ITEM # 83170	M		

CRIO® CHOKES 12-GAUGE EXTENDED, PORTED, NICKEL-PLATED

Fits: SBell, M2, Montefeltro, Legacy, Vinci, SuperSport, Super Vinci, ETHOS, 828U

ITEM # 83040P	SKEET 1	ITEM # 83043P	MOD
ITEM # 83041P	IC	ITEM # 83044P	IM
ITEM # 83042P	SKEET 2		

STANDARD CHOKES 20-GAUGE, FLUSH (not shown)

Standard thread – Fits: Nova

ITEM # 80050P	F	ITEM # 80062P	IC
ITEM # 80051P	IM	ITEM # 80053P	C
ITEM # 80052P	M		

CRIO® CHOKES 20-GAUGE, FLUSH (not shown)

Fits: SuperSport, Cordoba, Legacy, Montefeltro, Ultra Light, M2

ITEM # 83054P	F	ITEM # 83051P	IC
ITEM # 83053P	IM	ITEM # 83050P	C
ITEM # 83052P	M		

CRIO® CHOKES 28-GAUGE, FLUSH (not shown)

Fits: Legacy 28-ga., ETHOS 28-ga., and Ultra Light 28-ga.

ITEM # 61332P	F	ITEM # 61335P	IC
ITEM # 61333P	IM	ITEM # 61336P	C
ITEM # 61334P	M		

CRIO® CHOKES 12-GAUGE EXTENDED, MATTE BLACK (not shown)

Fits: SBell, M2, Montefeltro, Legacy, Vinci, SuperSport, Super Vinci, ETHOS, 828U

ITEM # 83059	F	ITEM # 83056	IC
ITEM # 83058	IM	ITEM # 83055	C
ITEM # 83057	M		

CRIO® CHOKES 20-GAUGE EXTENDED, MATTE BLACK (not shown)

Fits: SuperSport, Cordoba, Legacy, Montefeltro, Ultra Light, M2

ITEM # 83157	F	ITEM # 83166	IC
ITEM # 83164	IM	ITEM # 83167	C
ITEM # 83165	M		

CRIO® CHOKES 20-GAUGE EXTENDED, PORTED, STAINLESS (not shown)

Fits: SuperSport, Cordoba, Legacy, Montefeltro, Ultra Light, M2

ITEM # 83045P	SKEET 1	ITEM # 83048P	MOD
ITEM # 83046P	IC	ITEM # 83049P	IM
ITEM # 83047P	SKEET 2		

STANDARD CHOKES 12-GAUGE EXTENDED, MATTE BLACK

Standard thread – Fits: Nova, SuperNova, M4

ITEM # 83020P	12-GA. PASS	ITEM # 80105P	12-GA. EXTRA-FULL TURKEY
ITEM # 83021P	12-GA. DECOY		

STANDARD CHOKES 20-GAUGE EXTENDED, MATTE BLACK (not shown)

Standard thread – Fits: Nova

ITEM # 83022P	20-GA. EXTRA-FULL TURKEY
---------------	---------------------------------

SPECIFICATIONS AND PRICES SUBJECT TO CHANGE WITHOUT NOTICE.

Range Series Bag & Gun Cases

Gear for a great day at the range



ULTRA RANGE BAG

Large enough for four boxes of shells, shooting glasses, chokes, a range towel and whatever else you might need for the day. Constructed of 1680D PVC-backed fabric, this range bag is built to last. EVA foam bottom, water-resistant zippers with custom pulls and removable internal dividers round-out the features on this premium bag. Measures 17" x 10" x 8".

ITEM # 94050 Black



GUN SOCK

Most gun cases hold in moisture, promoting rust. The Benelli gun sock actually lets the gun breathe and its material is impregnated with VCI to keep your gun lubricated and protected from rust.

ITEM # 90505 Black
ITEM # 90506 Red



A. RANGE SHOTGUN CASE

Attractive and durable case constructed of 600D PVC-backed fabric with custom-pull, water-resistant zippers. Snag- and tear-resistant 600D interior fabric lining. 53" case. ITEM # 94020 Black



B. RANGE RIFLE CASE

Attractive and durable case constructed of 600D PVC-backed fabric with heavy-duty zippers. Center pocket features an internal strap to keep binoculars secure during transport. Snag- and tear-resistant 600D interior fabric lining. 49" case. ITEM # 94025 Black



Back

Ducker & Lodge Series Gear
Simply Perfect for the Range or Field

A. DUCKER BACKPACK / BLIND BAG

An easy-carrying pack that's constructed of 600D PVC-backed fabric, making it very rugged and water resistant. This feature-rich bag includes: external shell holders, a hard-shell glasses pouch, custom zipper pulls, reinforced straps, and a padded, breathable back. The self-supporting EVA bottom design and easy-access zippered top make this pack ideal for any blind. Measures 17" x 7" x 12".

ITEM # 94031 Max-7™ ITEM # 94035 Bottomland™



B.

C. DUCKER PRO BLIND BAG

Securely transport everything for your hunt with the Ducker Pro Blind Bag. Constructed of 600D PVC-backed fabric, it features an EVA foam bottom, heavy-duty zippers and pulls, and strategically designed pouches and dividers to optimize organization. Measures 20" x 12" x 11".

ITEM # 94043 Max-7™
ITEM # 94046 Bottomland™



C.



D.

D. LODGE DOVE BELT

Transporting and storage of birds and shells on the Dove Field is a literal snap with the Dove Belt system from Benelli's Lodge Collection. Constructed of waxed cotton, the shell pouches feature mechanical snap closures to ensure they stay either open or closed, while the game pouch uses magnetic snaps to keep game where you put it. A leather belt and water bottle holder round out this handsome offering.

ITEM # 94085 Olive Tan Canvas

E. LODGE RANGE BAG

Makes transporting shells around a sporting course or to the field a breeze. This shooting bag from Benelli's Lodge Collection comfortably holds four boxes of shells and is equipped with both carry handles and a shoulder strap. Constructed of handsome, diamond-stitched waxed cotton with leather accents and a durable 210-lined interior, it also features a zippered front pocket with elastic loops for convenient storage of choke tubes. Measures 7" x 12" x 8" and fits four standard boxes of 25 shells (up to 12ga).

ITEM # 94080 Olive Tan Canvas



E.

F. LARGE LODGE SHELL POUCH

Easily transport multiple boxes of shells, loose or otherwise, at once in the Large Shell Pouch from Benelli's Lodge Collection. Constructed of handsome diamond-stitched waxed cotton with leather accents and a durable 600D interior, it also features unique shell loops for immediate access to five shells when quick follow-up shots are required. Measures 9.5" x 9.5" x 5".

ITEM # 94070 Olive Tan Canvas

G. SMALL LODGE SHELL POUCH

Easily carry a box of shells in the field or on the range with the Small Shell Pouch from Benelli's Lodge Collection. Constructed of handsome diamond-stitched waxed cotton with leather accents and a durable 600D interior, it also features unique shell loops for immediate access to two shells when quick follow-up shots are required. Measures 5.5" x 8" x 3" and fits one standard box of 25 shells (up to 12ga).

ITEM # 94075 Olive Tan Canvas



F.



G.



DUCKER PRO GUN CASE WITH POCKET

Modeled after traditional floater cases, the Ducker Pro is a sleek and durable take constructed of 600D PVD-backed fabric. A water-resistant primary zipper provides a generous opening for easy storage to and from the snag and tear free 600D interior, while an oversized front pocket allows for easy storage of chokes and a choke wrench. 53" case.

ITEM # 94091 Max-7™ ITEM # 94095 Bottomland™



DUCKER GUN CASE

600D PVC-backed fabric with custom-pull, water-resistant zippers to protect your prized Benelli. Snag- and tear-resistant 600D interior fabric lining. 53" case.

ITEM # 94001 Max-7™ ITEM # 94005 Bottomland™



LODGE GUN CASE

This diamond-stitched, waxed cotton Lodge Collection Gun Case offers excellent protection. Durable 600D interior fabric lining resists snags and tearing. A hidden pocket allows easy storage of choke tubes and a choke wrench.

ITEM # 94060 Olive Tan Canvas

SPECIFICATIONS AND PRICES SUBJECT TO CHANGE WITHOUT NOTICE.

Benelli Vests, Shooting Shirts & Pullovers



A.

A. LODGE SHOOTING VEST
 Constructed of wide mesh and breathable cotton, the Shooting Vest from Benelli's Lodge Collection is your ideal solution to those hot days on the range, course, or field. Diamond-stitched shoulders padded "just enough," oversized front pockets, and a rear pouch, round out this offering and provide the versatility demanded by serious shooters. Specify size when ordering: sizes S - XXL

ITEM # 94301 Olive Tan Canvas

Back

Front



B.

NEW!

B. HERITAGE 1/4 ZIP TRI-BLEND SWEATSHIRT
 This midweight 1/4-zip crewneck sweatshirt has a relaxed fit and ribbed collar and trim detail. Extra-soft 50% polyester/45% cotton/5% rayon construction makes it feel as great as it looks. Specify size when ordering: sizes S - XXL
 ITEM # 95091 Fall Heather Grey



C.

C. HEAVYWEIGHT PULLOVER
 Performance heavyweight 1/4-zip featuring microfleece interior and three "hidden" pockets for use in the field, constructed from 95% Poly/5% Spandex-blend fabric. Includes Benelli icon on back yoke. Specify size when ordering: sizes S - XXL

- ITEM # 95053 Max-7™
- ITEM # 95054 Bottomland™
- ITEM # 95059 Dark Gray
- ITEM # 95060 Earth

Dark Gray

Earth



MOSSY OAK

Back

REALTREE MAX-7

Dark Gray

E.

REALTREE MAX-7

E. HEAVYWEIGHT QUARTER-ZIP HOODIE
 Performance heavyweight 1/2-zip hoodie featuring microfleece interior, chest and kangaroo pockets, and modern thumbhole design in the sleeves for superior ability in the field. Constructed from 10.6 oz., 95% / 5% poly-spandex blend fabric. Specify size when ordering: sizes S - XXL

- ITEM # 95066 Max-7™
- ITEM # 95067 Dark Gray



Benelli Branded Hoodies



A. HEAVYWEIGHT HOODED LOGO SWEATSHIRT
 Heavyweight modern style hoodie featuring microfleece moisture-wicking interior, constructed from 9.4 oz., 100% Polyester Fleece. Specify size when ordering: sizes S - XXL

- ITEM # 95057 Charcoal Heather
- ITEM # 95078 Military Green
- ITEM # 95079 Sand Dune
- ITEM # 95080 True Navy



B. ALL DAY PERFORMANCE MICRO TERRY HOODIE
 Here's a three-season option as a layering piece or outerwear. It's made of skin-pleasing 65% polyester/29% rayon/6% spandex performance micro-terry fabric with just the right amount of stretch. Deep front pockets with cuffed waist and sleeves. Specify size when ordering: sizes S - XXL

- ITEM # 95093 Black

NEW!

C. CONFLUENCE PRO HOODIE - UPF 30
 You're ready for outdoor fun with this 100% polyester performance hoodie. Outfitted with advanced moisture-wicking technology and UPF 30 protection from the sun. The hood has a neckline button to help ward off chills. On-seam, side-zip pocket. Specify size when ordering: sizes S - XXL

- ITEM# 95092 Athletic Heather/Black Camo Sleeves



NEW!

D. TRANSIT PERFORMANCE HOODIE
 Stay warm in this heavyweight performance hoodie. It's constructed of 100% bonded polyester on the outside and ultrasoft polar fleece inside. Contrasting colors in the hood and drawcords. The deep pouch pocket has an internal zippered security pocket. Specify size when ordering: sizes S - XXL

- ITEM# 95094 Black/Dark Grey Trim



D. MIDWEIGHT PERFORMANCE HOODY
 Performance midweight hoodie featuring a microfleece interior and modern thumbhole design for use as a mid-layer in the field. Constructed from 7.5 oz., 90% / 10% poly-spandex blend fabric. Specify size when ordering: sizes S - XXL

- ITEM # 95061 Bottomland™
- ITEM # 95062 Earth



Earth



Benelli Branded T-Shirts

A.



B.



C.



NEW!

A. VICTORY TRI-BLEND T-SHIRT
This sporty classic-fit tee is made using ultrasoft tri-blend material for comfort and durability. Ideal for summer fun. 50% recycled polyester/38% cotton/12% rayon. Specify size when ordering: sizes S - XXL
ITEM # 95095 Heather True Red

NEW!

B. PERFORMANCE T-SHIRT - UPF 30
A short-sleeve performance tee made with soft, moisture-wicking 100% recycled polyester that has integrated SPF 30 protection from UV rays. Specify size when ordering: sizes S - XXXL
ITEM # 95090 Black

NEW!

C. ALL AMERICAN LONG-SLEEVE T-SHIRT
Constructed of premium 100% ringspun cotton jersey, this classic-fit tee has long sleeves and a handy left chest pocket. Specify size when ordering: sizes S - XXXL
ITEM # 95096 Vintage Black
ITEM #95097 Ash Grey



Benelli

Front

D.

D. ELK CIRCLE T-SHIRT

A more modern fit, extra-soft Men's tee. Constructed from 4.3 oz., 40% Poly / 60% Cotton-blend fabric. Specify size when ordering: sizes S - XXXL

ITEM # 95016 Olive



Benelli

Front

E.

E. DUCK CIRCLE T-SHIRT

A more modern fit, extra-soft Men's tee. Constructed from 4.3 oz., 40% Poly / 60% Cotton-blend fabric. Specify size when ordering: sizes S - XXXL

ITEM # 95015 Gray



Benelli

Front

F.

F. WATERFOWL FLAG T-SHIRT

A more modern fit, extra-soft Men's tee. Constructed from 4.3 oz., 40% Poly / 60% Cotton-blend fabric. Specify size when ordering: sizes S - XXL

ITEM # 95010 Oxford



G.

G. TACTICAL FLAG T-SHIRT

A more modern fit, extra-soft Men's tee. Constructed from 4.3 oz., 40% Poly / 60% Cotton-blend fabric. Specify size when ordering: sizes S - XXL

ITEM # 95009 Charcoal

Benelli Hoodies and Shirts

Garments Just for Her



A.

NEW!

A. WOMENS ESSENTIAL HOODED SWEATSHIRT

Here's a sturdy, yet soft, classic brushed-cotton hoodie with extra-deep pouch pockets and a double-layered hood. Perfect for the range or camping. Specify size when ordering: sizes S-2XL

ITEM # 95088 Red



B.

NEW!

B. WOMENS CONFLUENCE HOOD - UPF 30

A lightweight performance hoodie that's great for layering or on its own. Super-soft 100% performance polyester construction with advanced moisture-wicking technology and UPF 30 protection from the sun. Built-in thumbholes in the sleeves. Specify size when ordering: sizes S-2XL.

ITEM # 95089 Athletic Heather



C.

NEW!

C. WOMENS INTRAMURAL TRI-BLEND TEE

This classic-fit, crewneck tee is crafted of an ultrasoft 50% recycled polyester/38% cotton/12% rayon blend. It has a guy's tee fit but is tailored for a woman's body. Specify size when ordering: sizes S-XL.

ITEM # 95098 Heathered Varsity Black



D.

NEW!

D. WOMENS INTRAMURAL RINGER TRI-BLEND TEE

This classic-fit, crewneck tee is crafted of an ultrasoft 50% recycled polyester/38% cotton/12% rayon blend. It has a guy's tee fit but is tailored for a woman's body. Specify size when ordering: sizes S-XL.

ITEM # 95099 Varsity White/True Red



Benelli Beansies & Hats
We've Got You Covered!



#91032
Blaze



#91300
Max-7™



#91301
Bottomland™



#91310
Faded Navy Mesh

#91312
Black Multicam
Mesh

#91218
Max-7™ Mesh

#91212
Waxed Tan
Mesh



#91306
Green Multicam
Mesh



#91303
Max-7™

#91307
Woodland Camo
Mesh



#91220
Faded Black
Mesh



#91308
Olive Copper
Mesh

#91304
Olive MOBO
Mesh



#91302
Black Pearl
& Red



#91219
Charcoal
Ripstop Mesh



#91305
Blaze Black
Mesh



#91203
Bottomland™
Mesh



#91211
FDE Ripstop
Mesh

